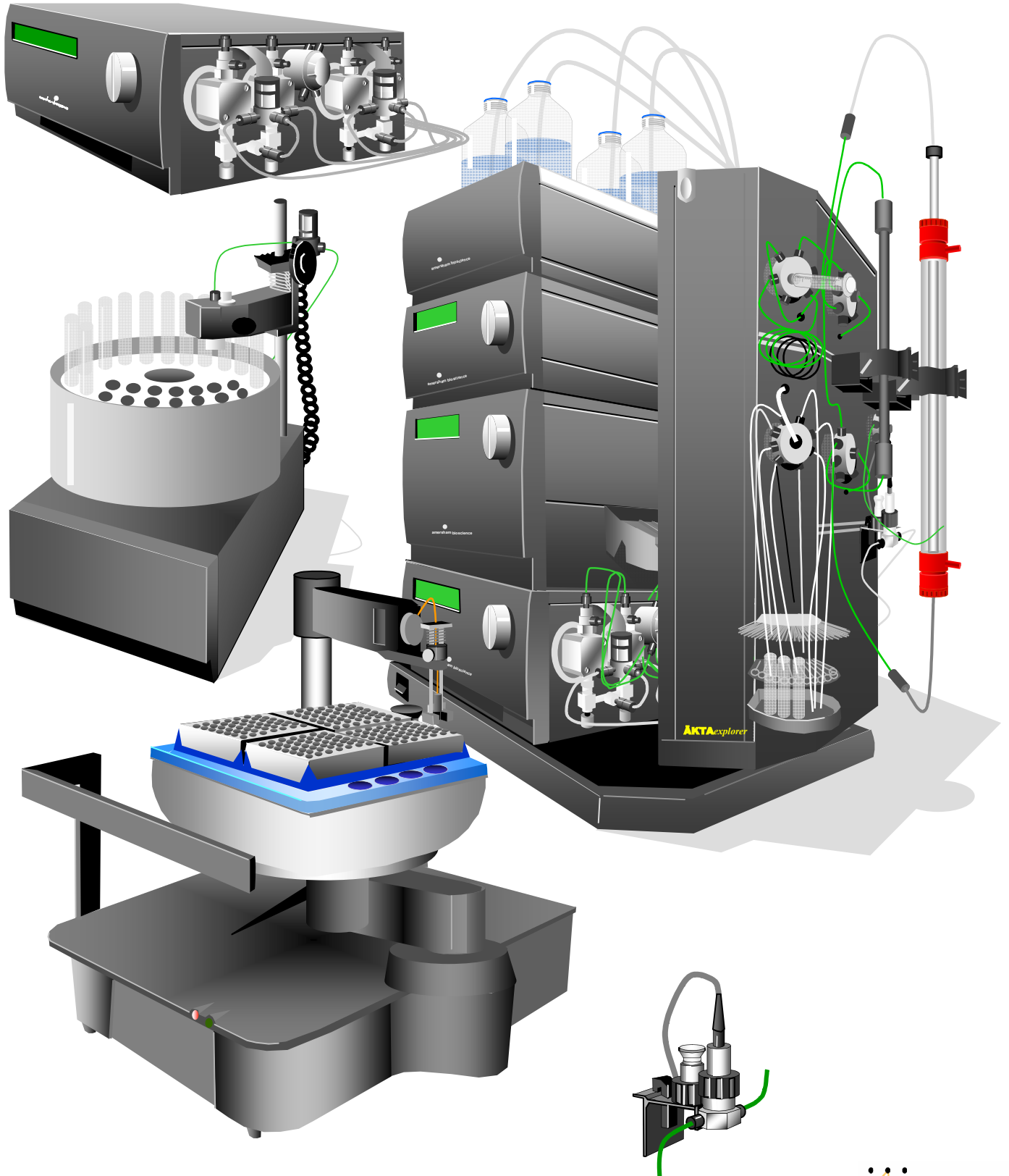
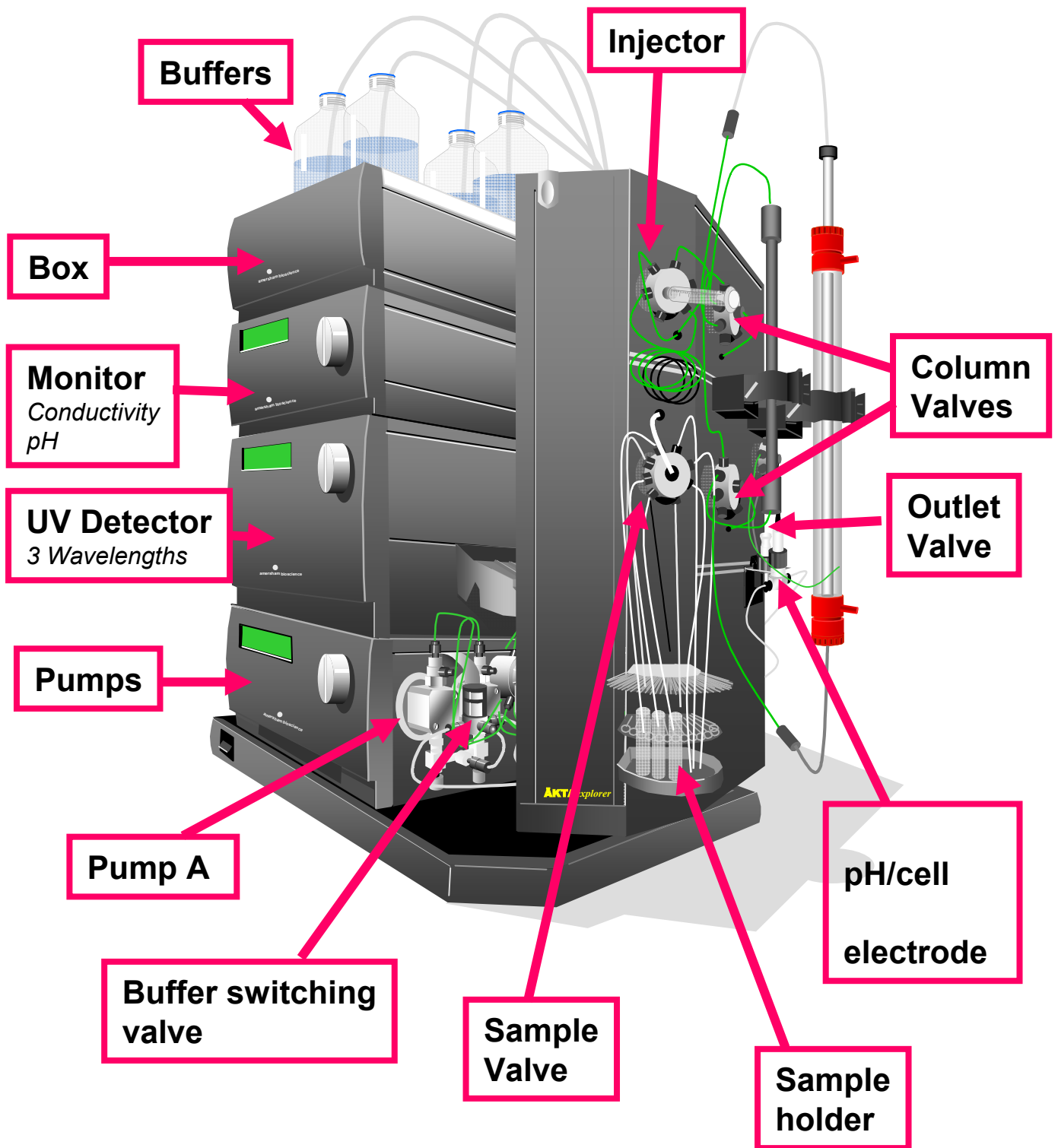


# ÄKTA system Training Guide

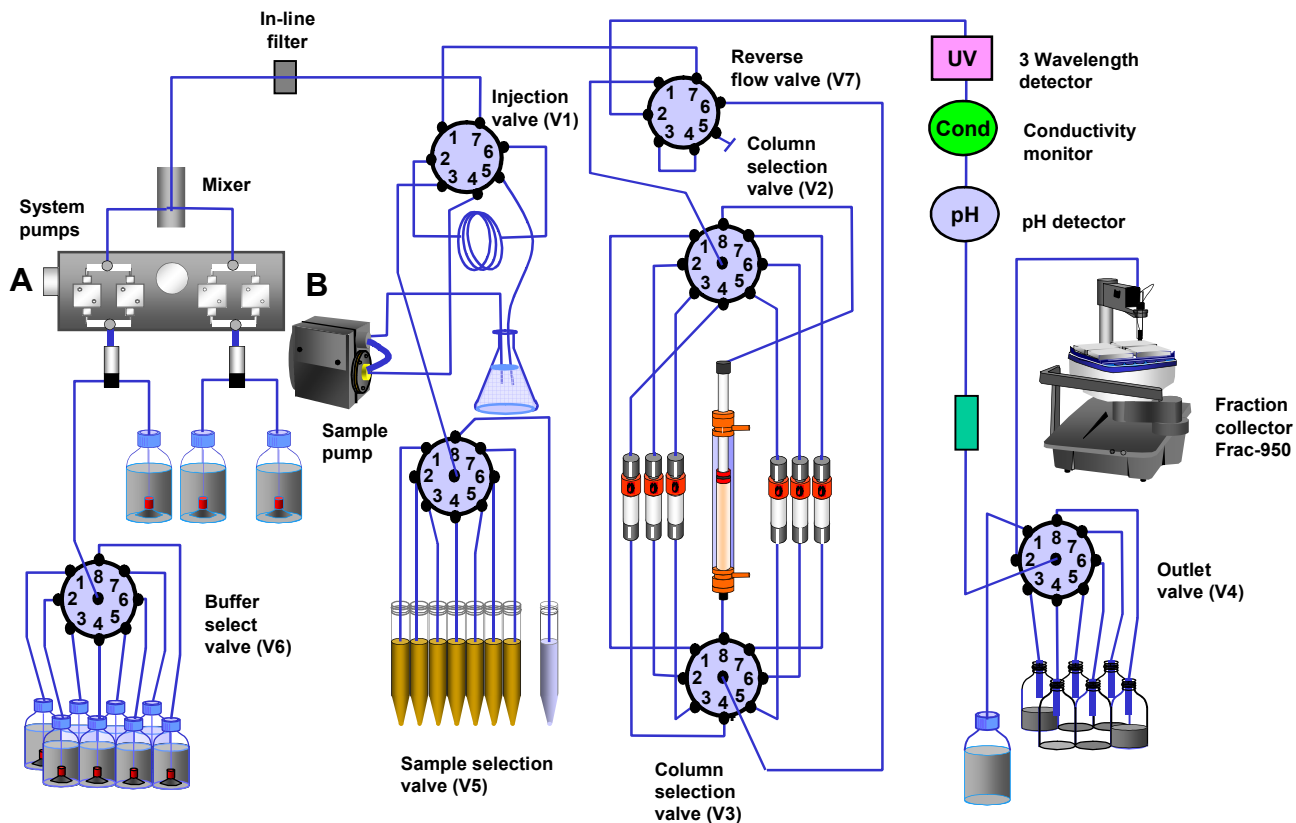
## Explorer 100 / 10



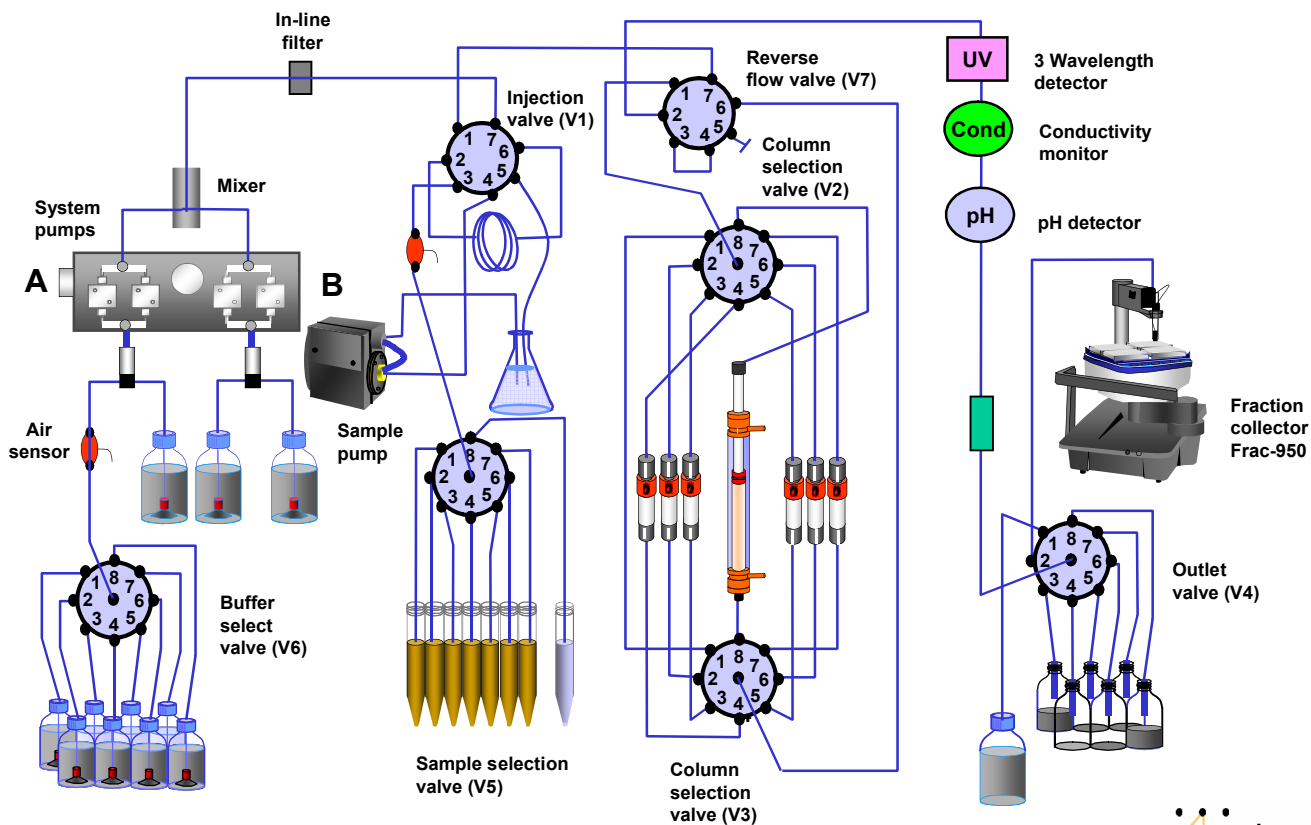
# ÄKTAexplorer



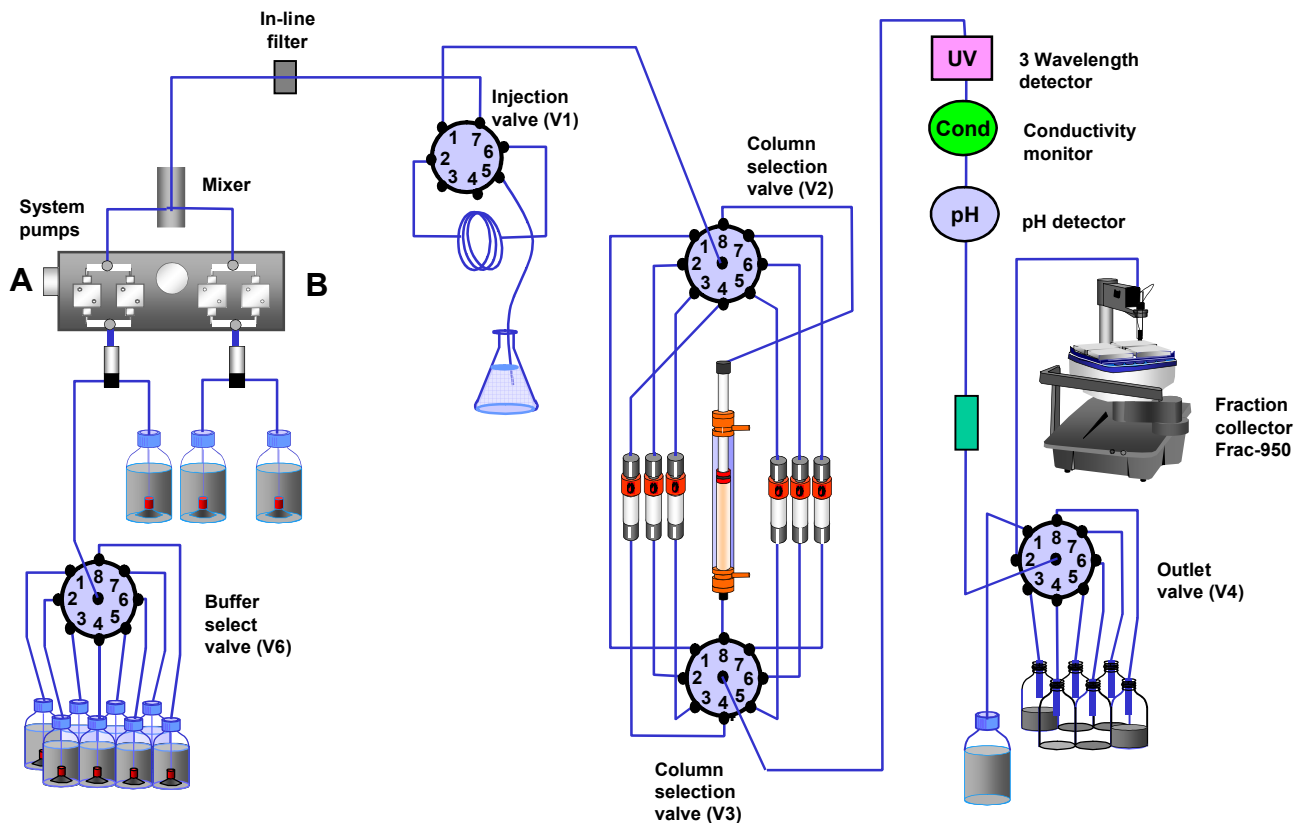
# ÄKTAexplorer 100



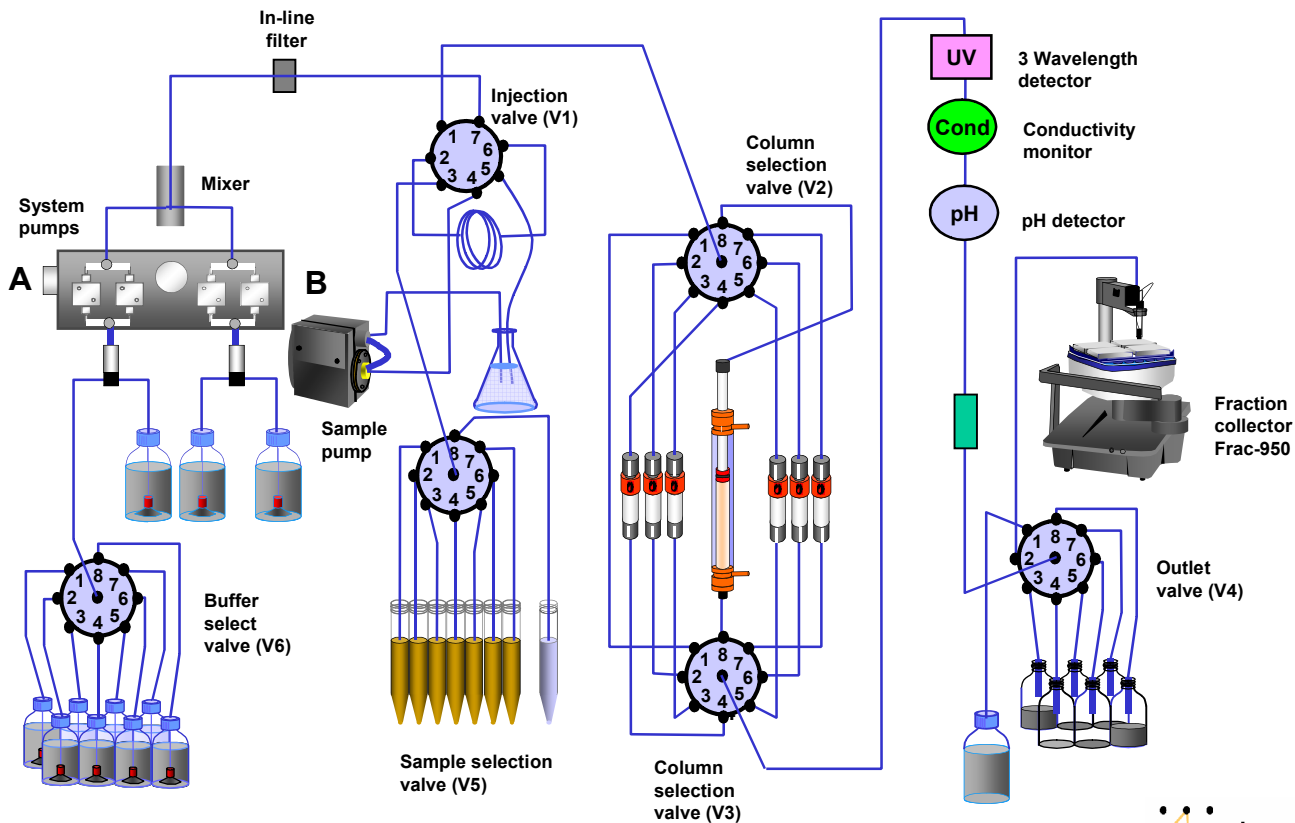
# ÄKTAexplorer 100 Air



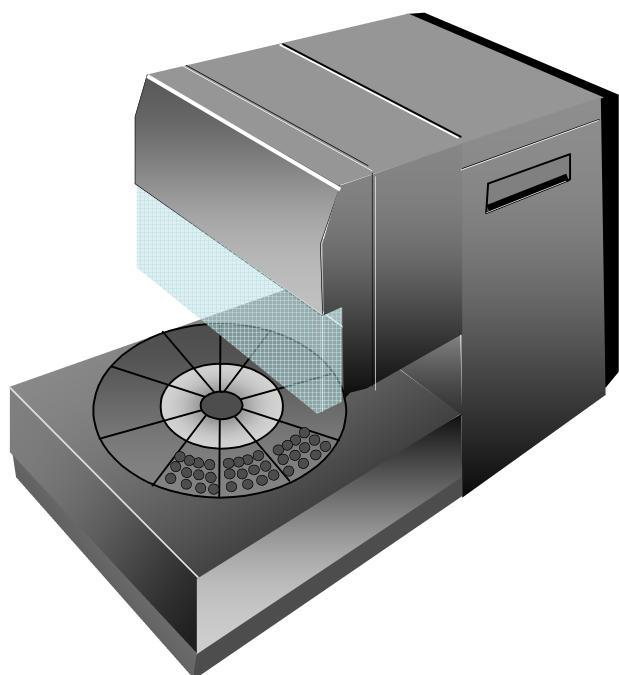
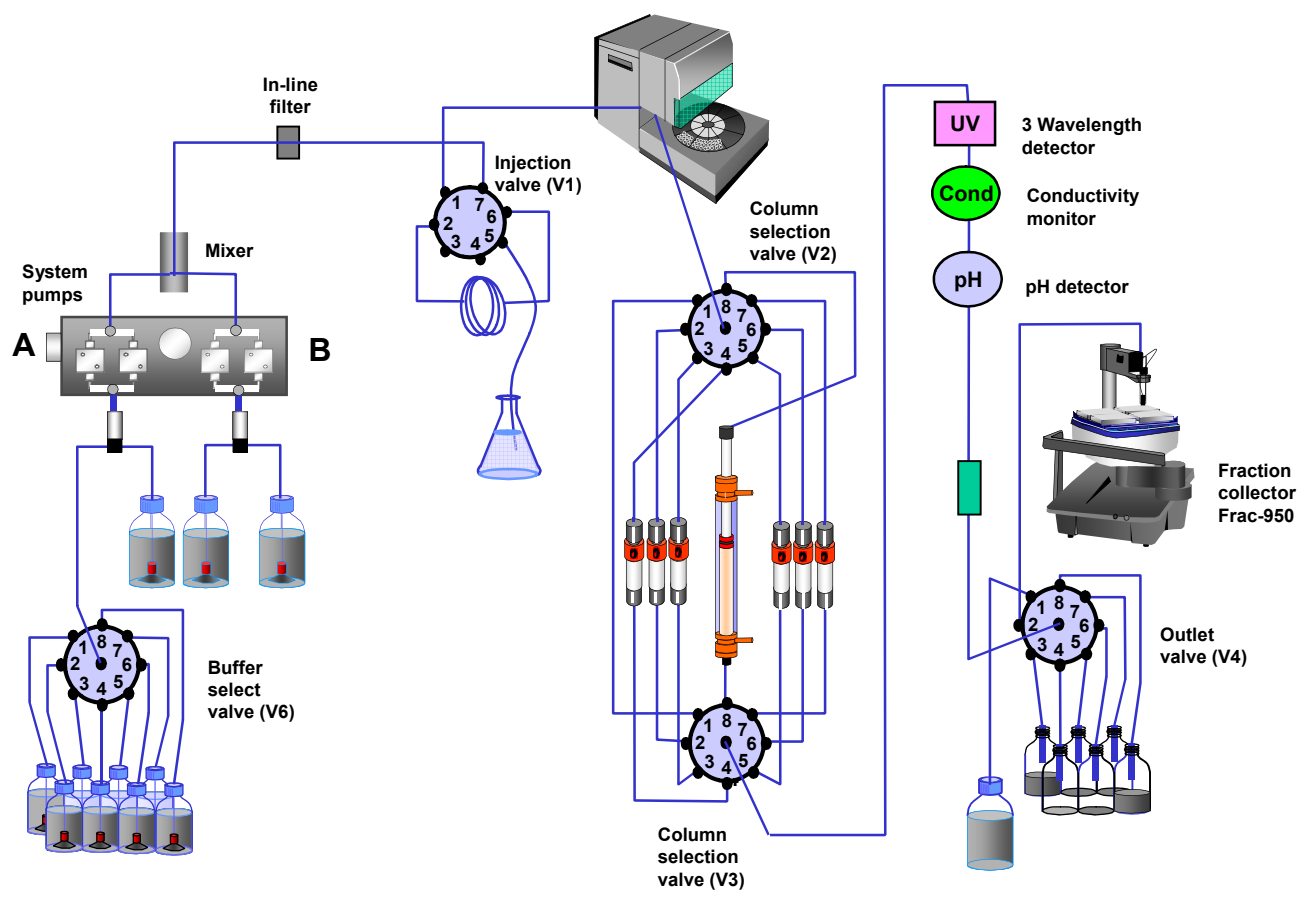
# ÄKTAexplorer 10



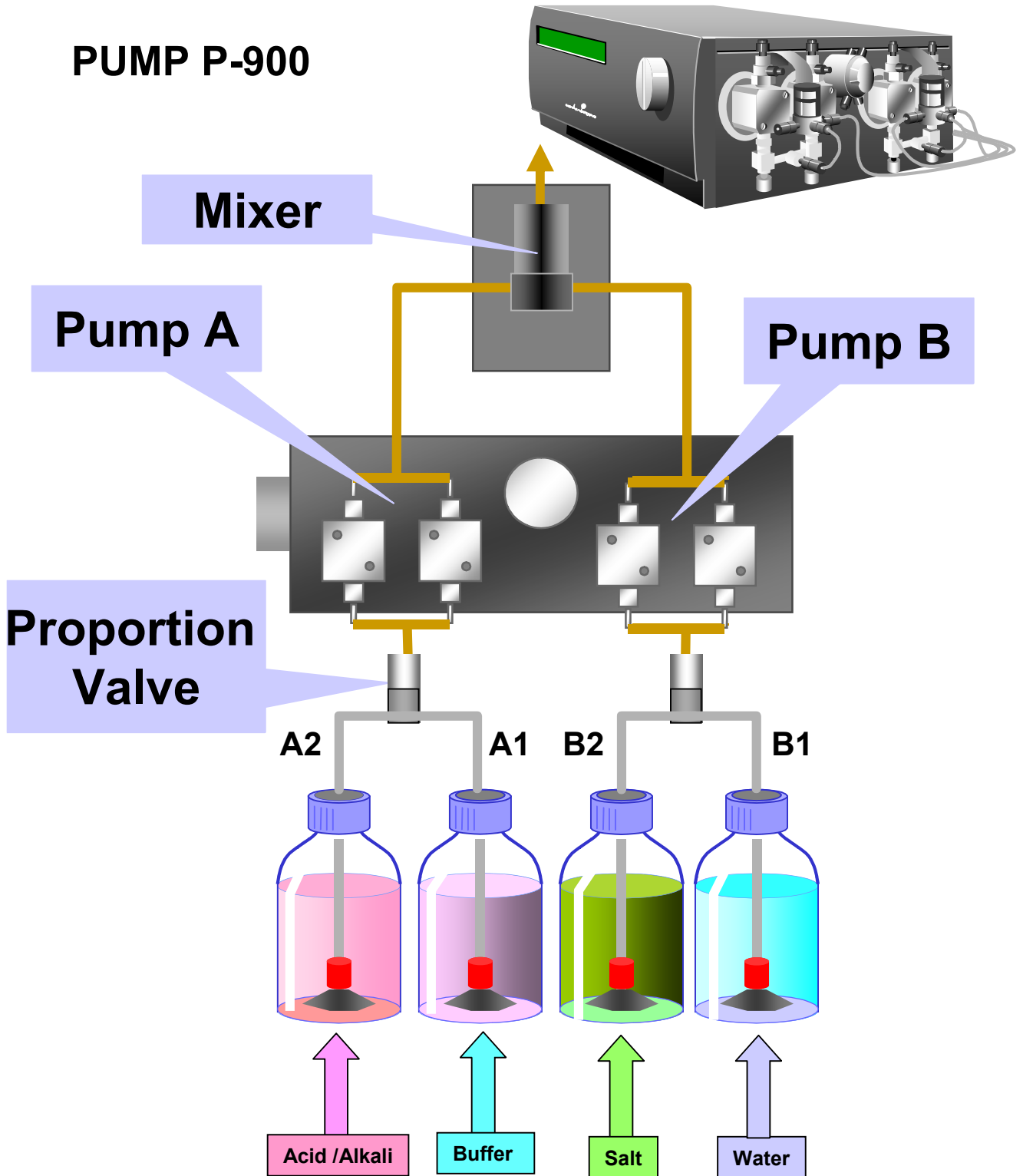
# ÄKTAexplorer 10 S



# ÄKTAexplorer 10 XT

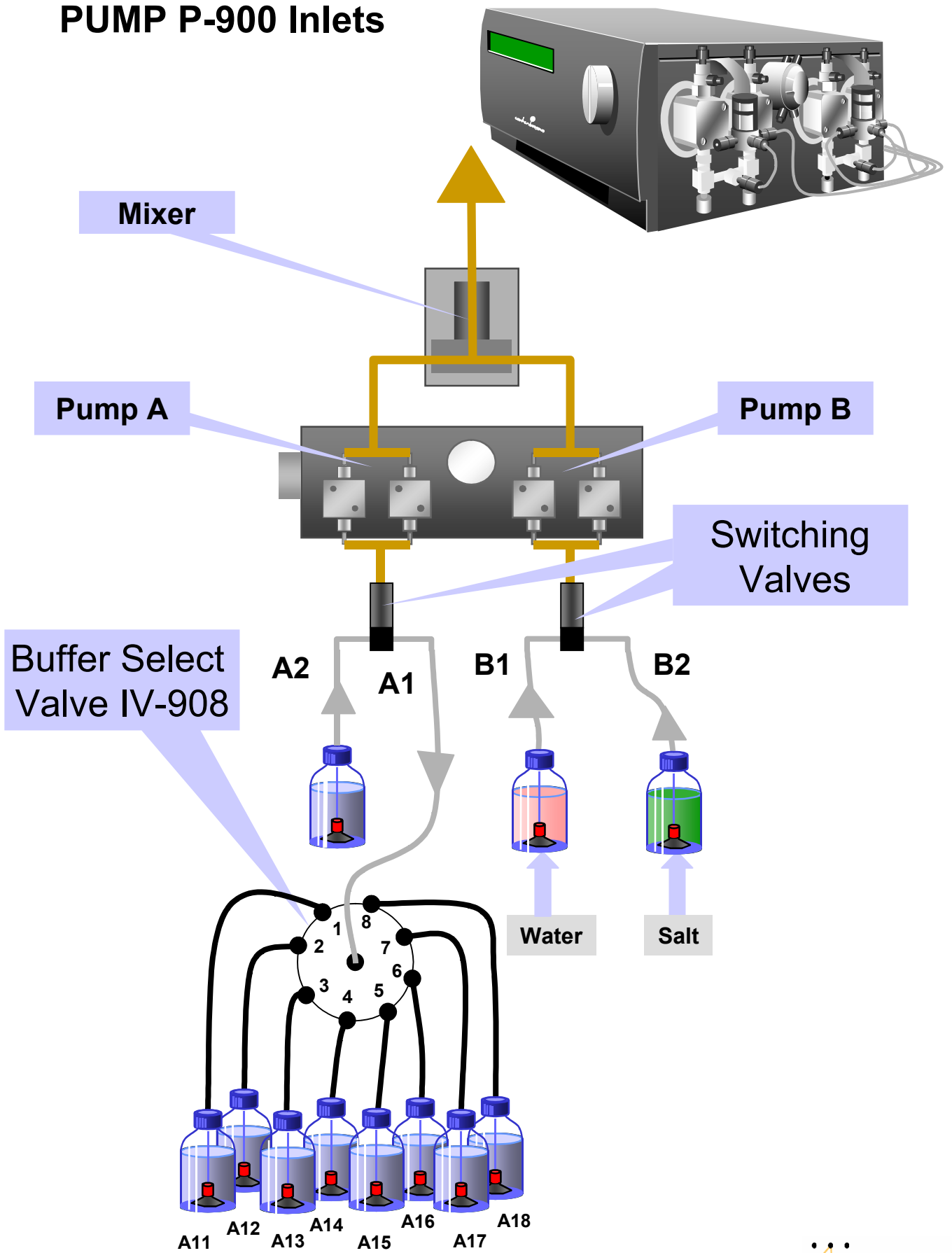


# PUMP P-900

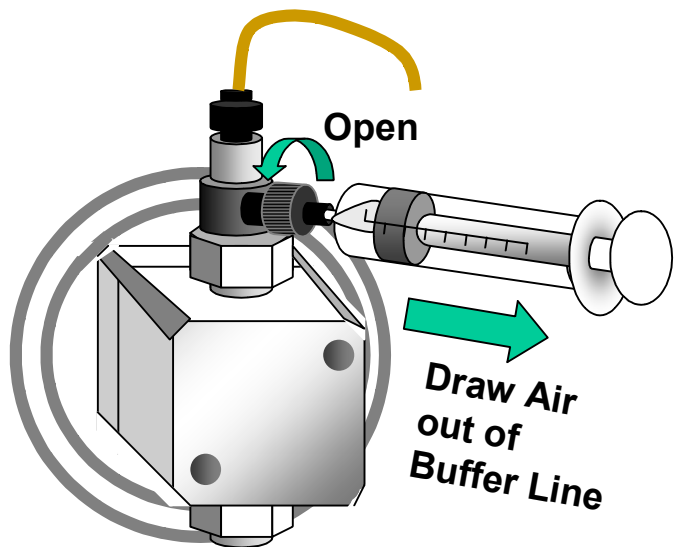
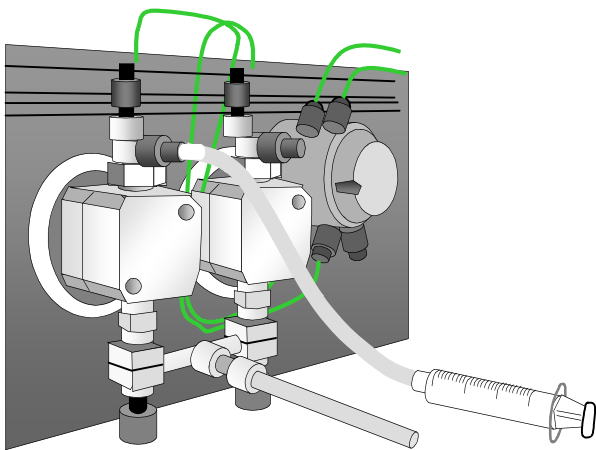
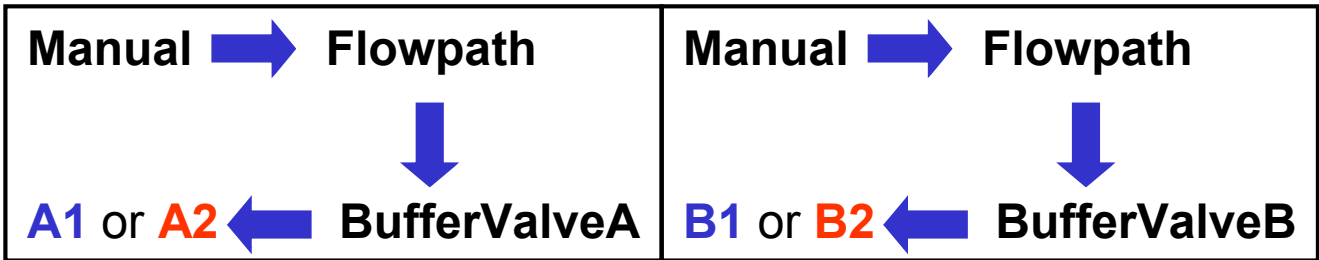
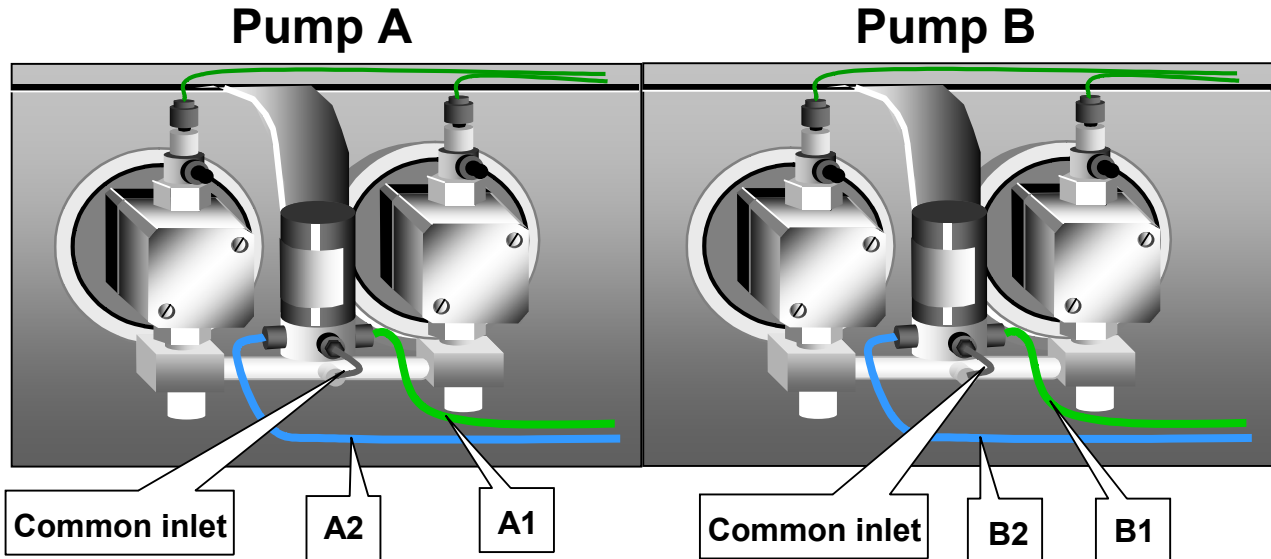


	GRADIENT	MIXER
ÄKTA 10 mls/min	<6 mls/min	0.6 ml mixer
	6 -14 mls/min	2 ml mixer
ÄKTA 100 mls/min	<30 mls/min	2 mls mixer
	30 - 50 mls/min	5 mls mixer
	50 - 100 mls/min	12 mls mixer

# PUMP P-900 Inlets

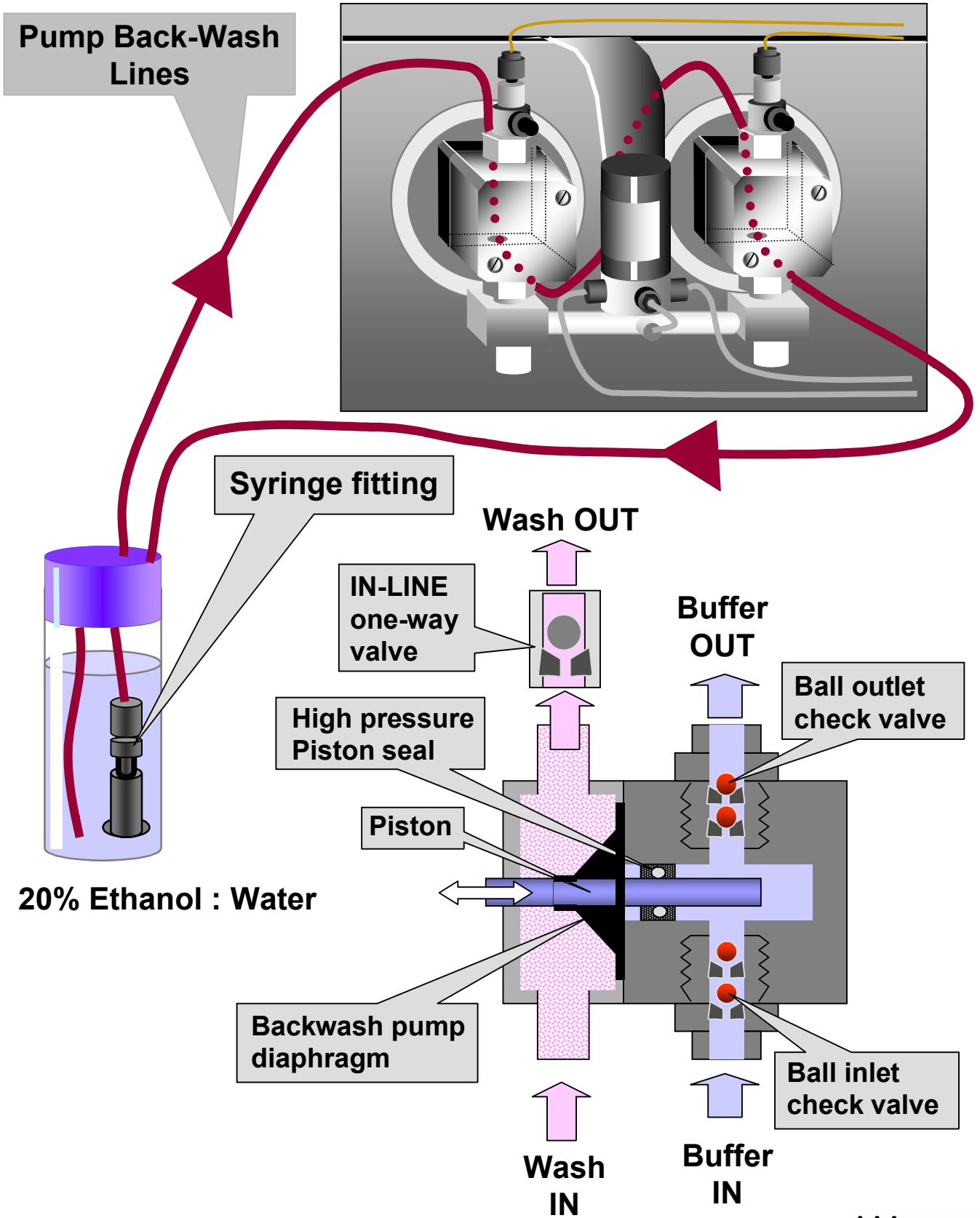


# PUMP P-900 Manually Priming Buffer Inlet Lines

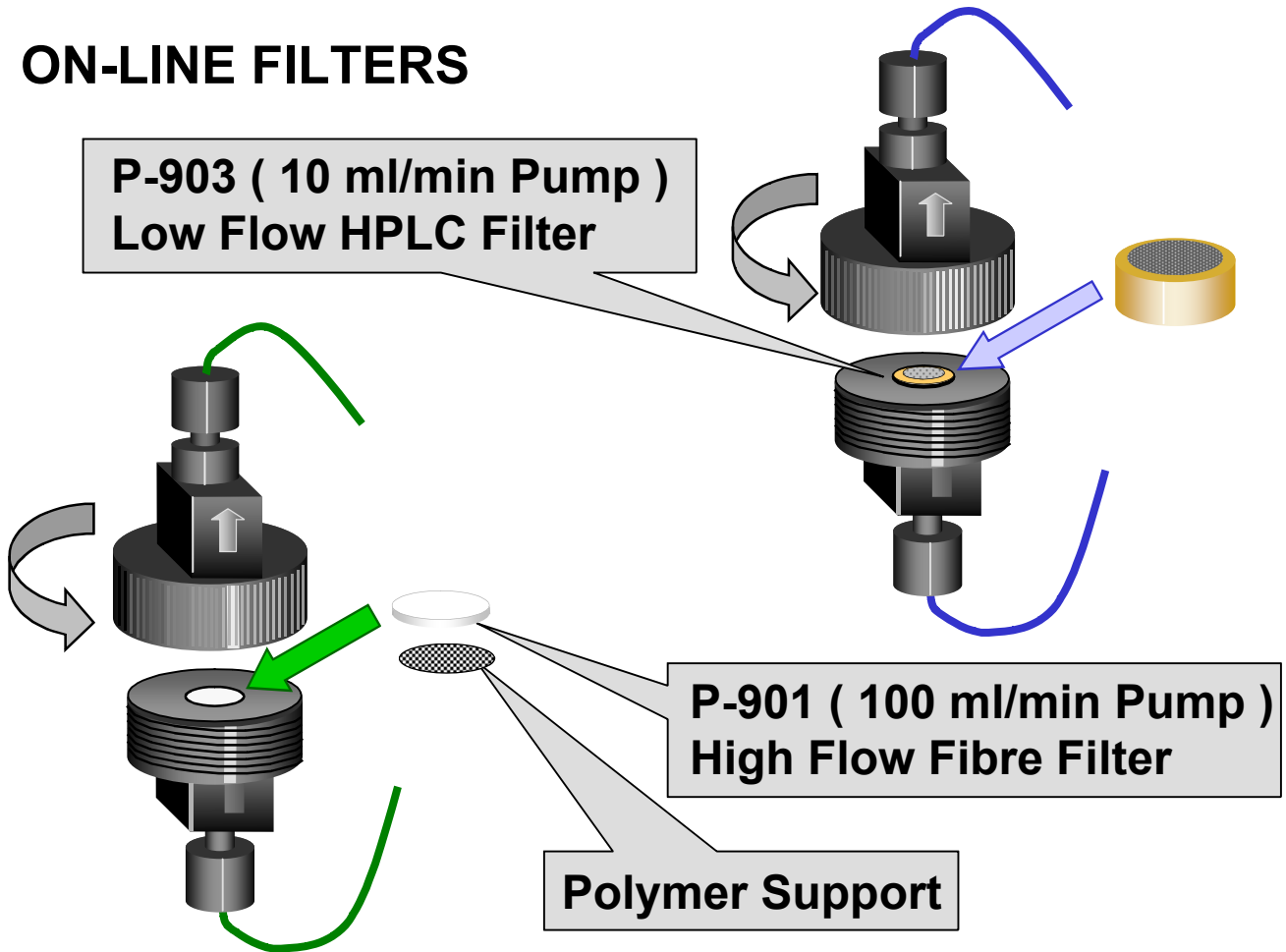




# PUMP P-900 Back - Wash Lines



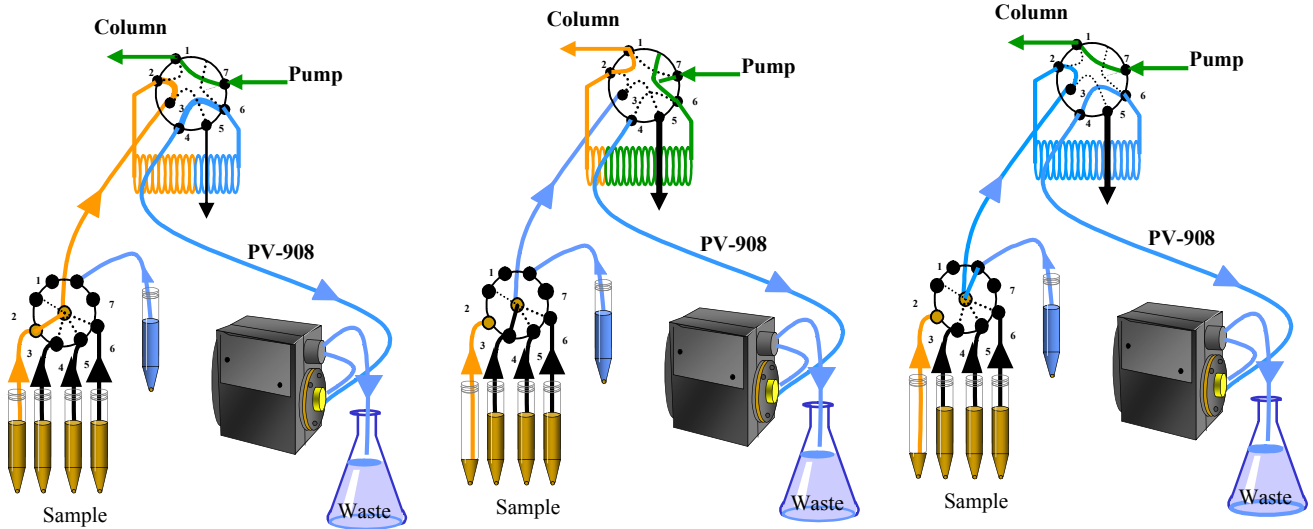
# ON-LINE FILTERS



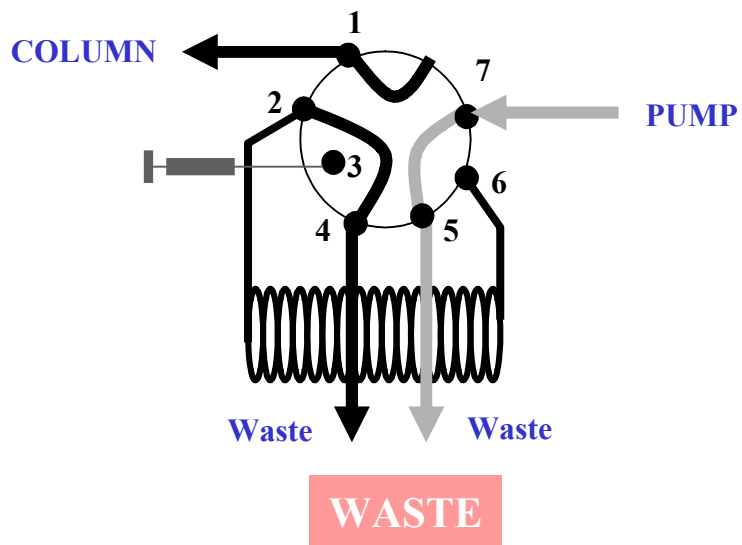
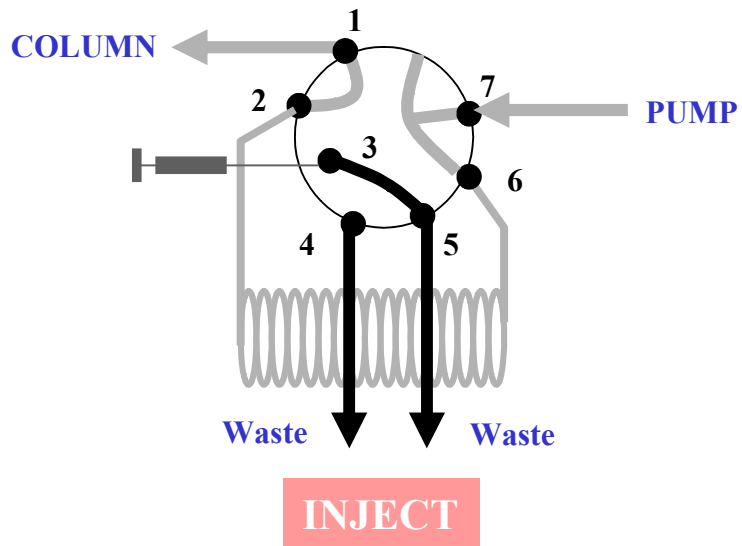
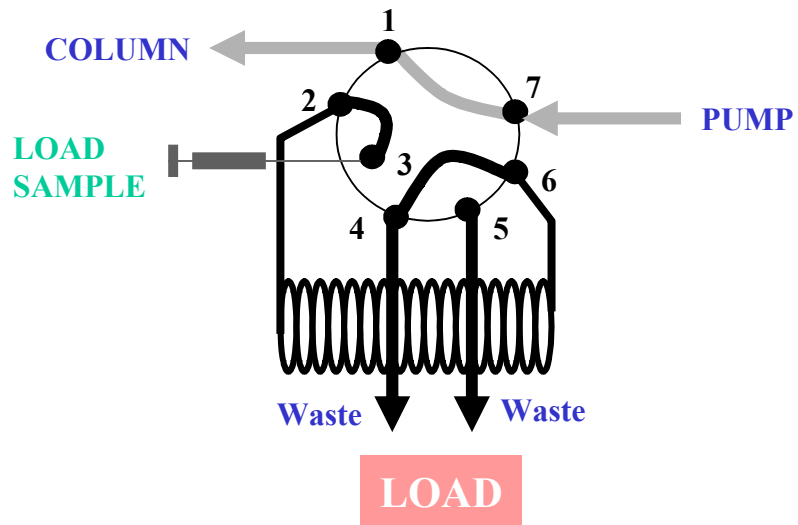
## LOAD (sample)

## INJECT (sample)

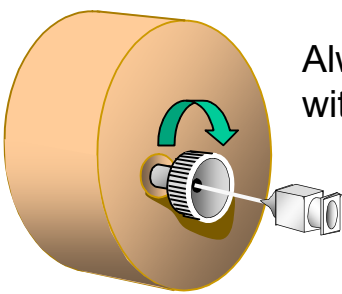
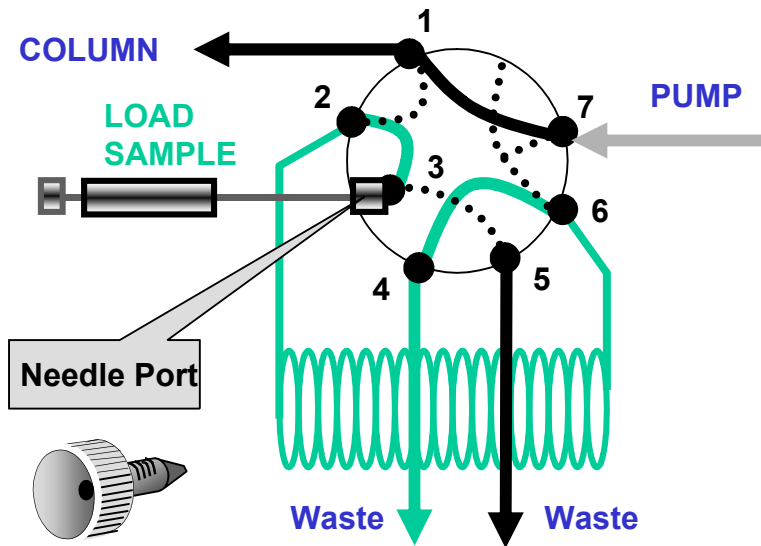
## LOAD (wash loop)



# INJECTION VALVE INV- 907

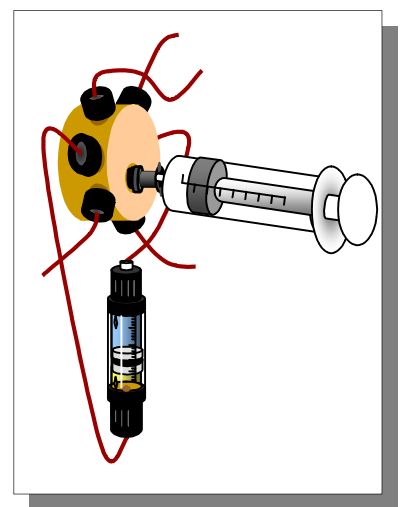
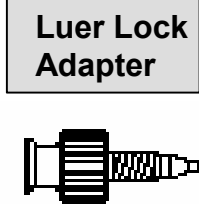
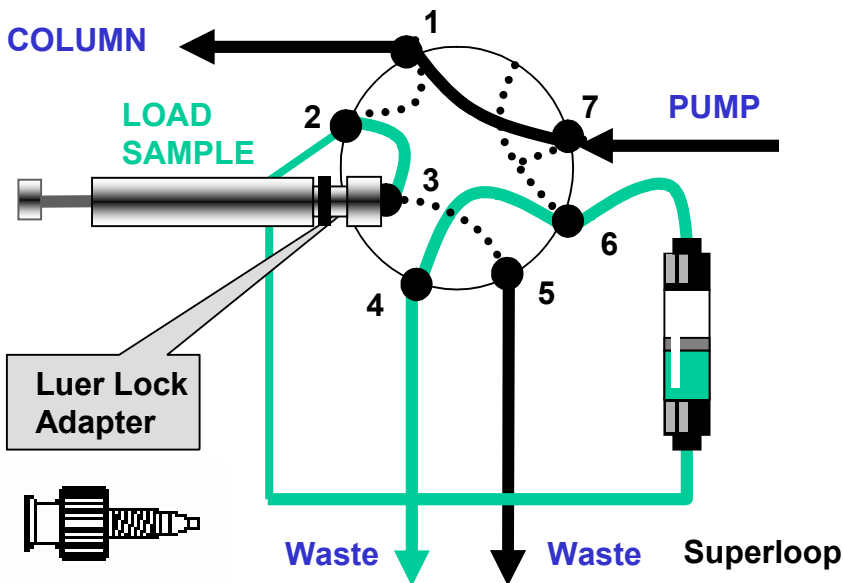
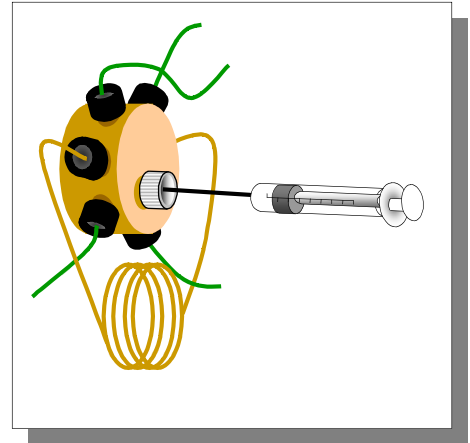


# SAMPLE LOADING METHOD

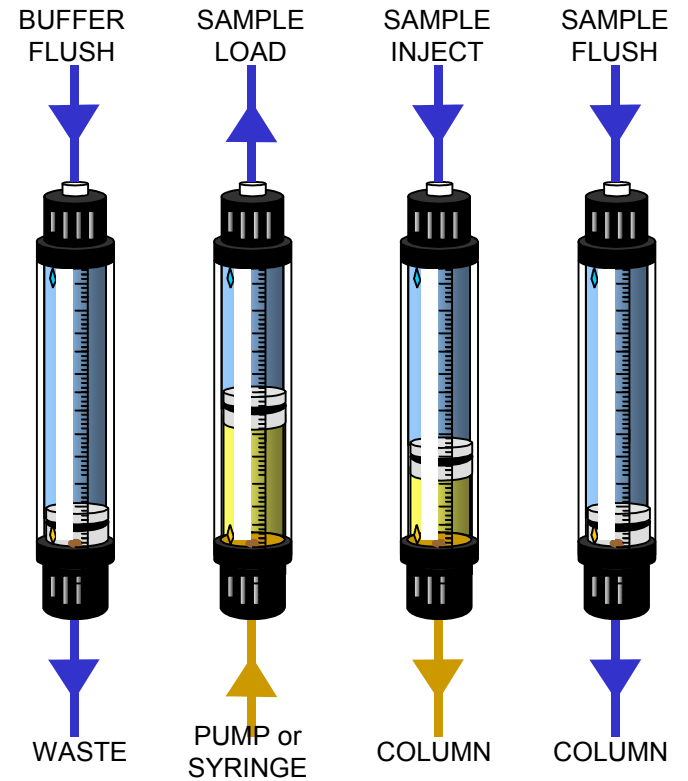
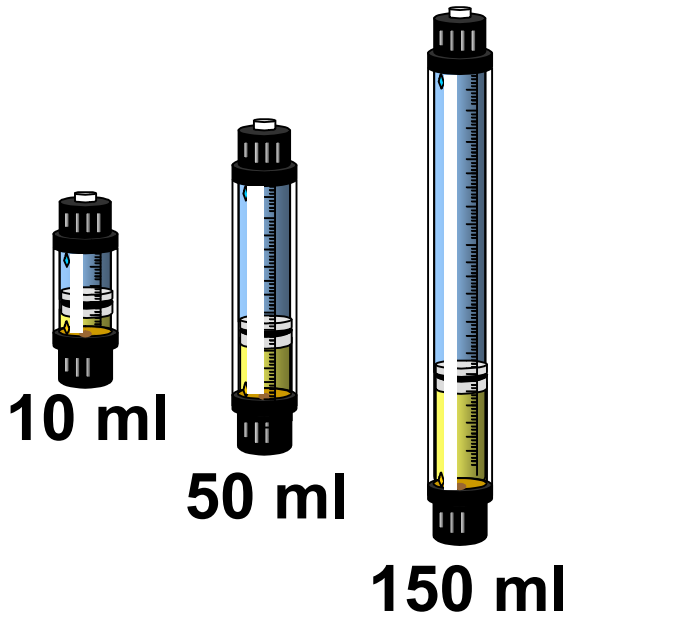
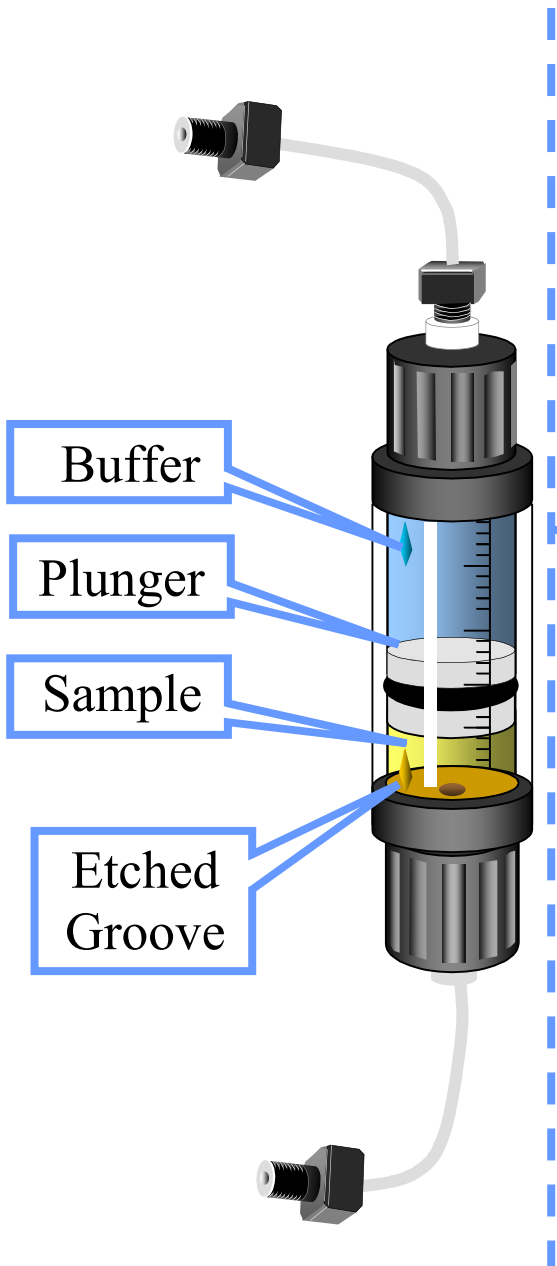


Always tighten by hand with needle inserted

**Do Not Overtighten**



# SUPERLOOPS



**Volume**

**Max. allowed column pressure**

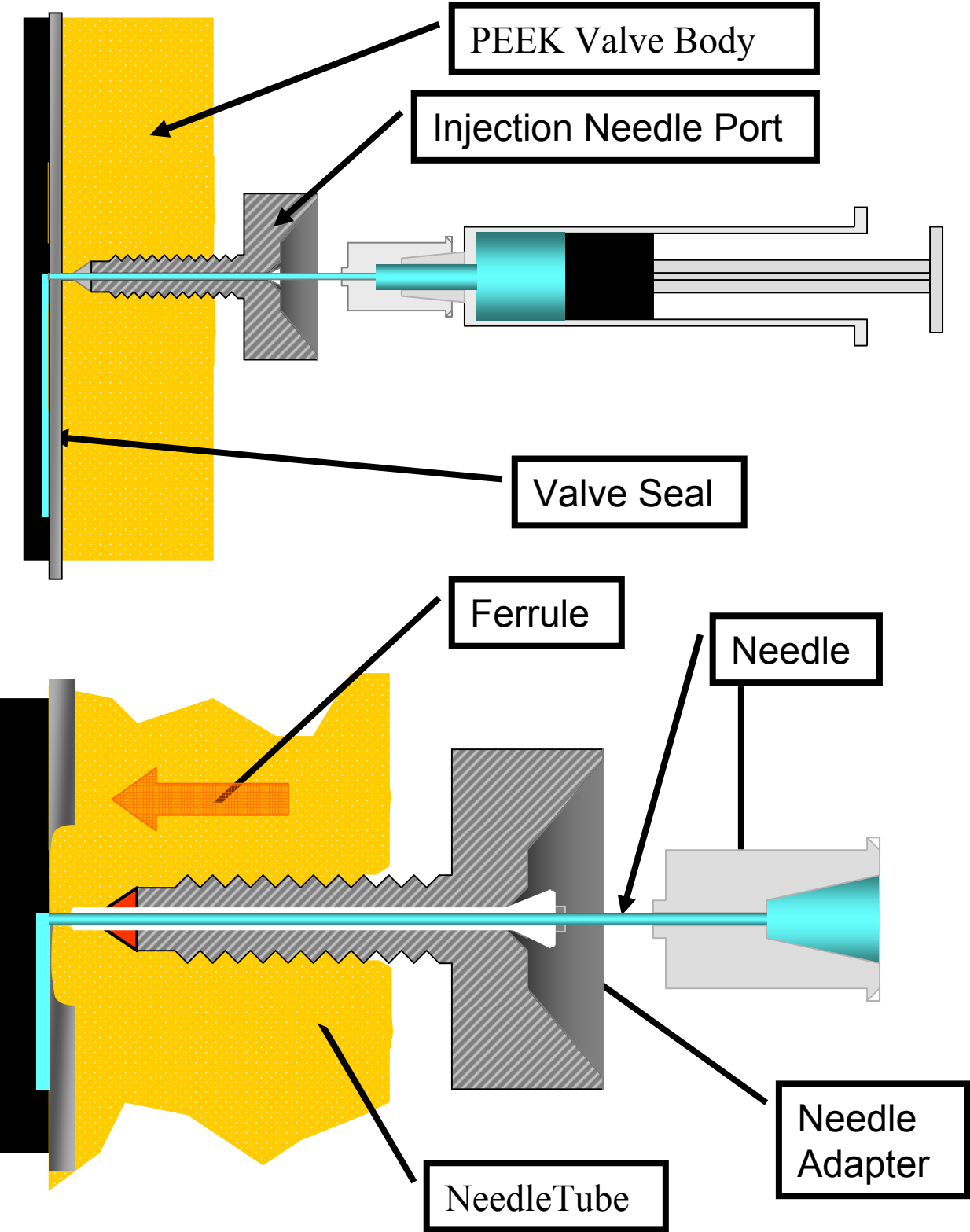
**Code No.**

10 ml  
50 ml  
150 ml

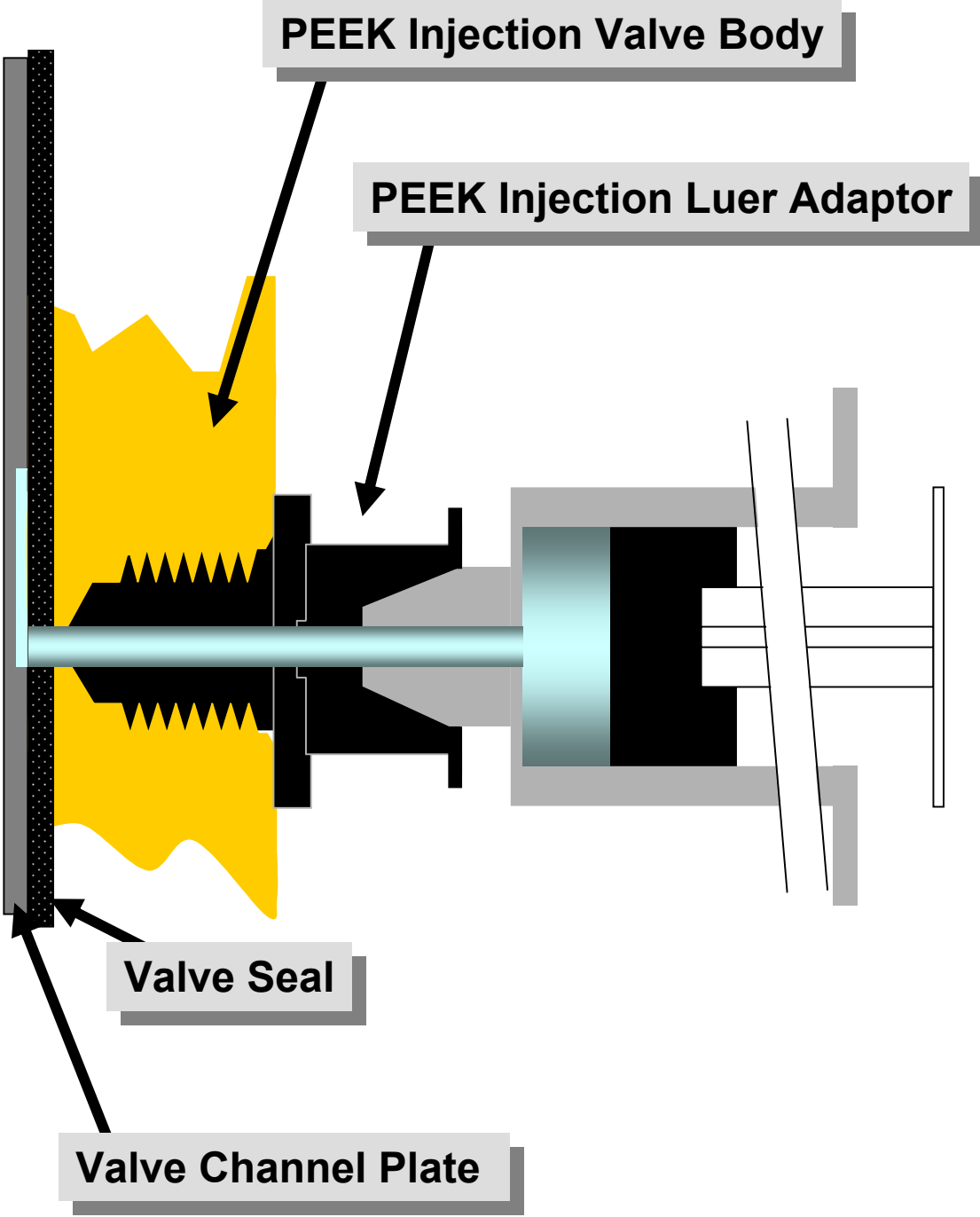
4 Mpa  
4 Mpa  
2 Mpa

18-1113-81  
18-1113-82  
18-1023-85

# INV-907 Injection Valve - Injection Port

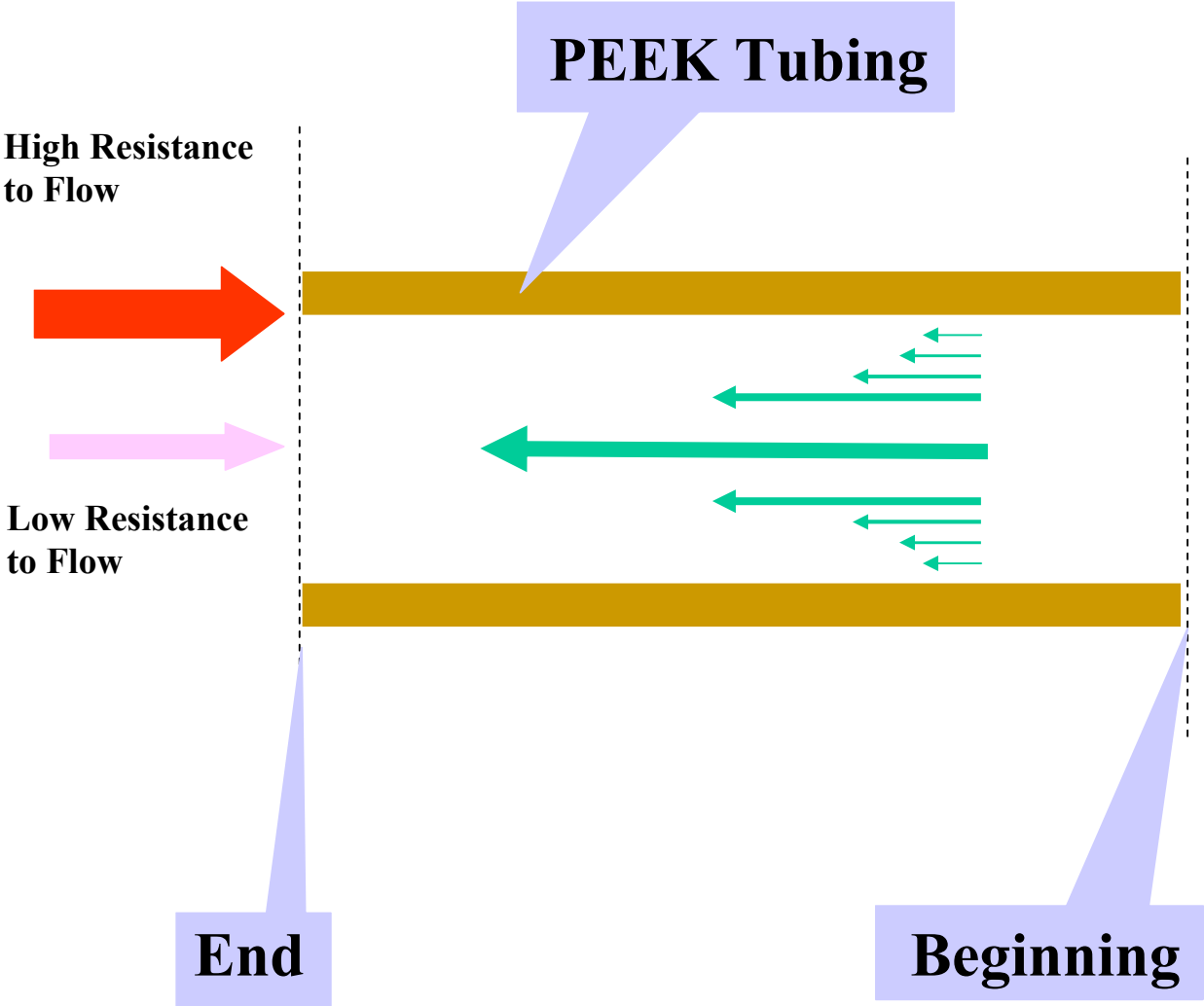


# INV-907 Injection Valve - Luer Adapter



# Fluid Dynamics

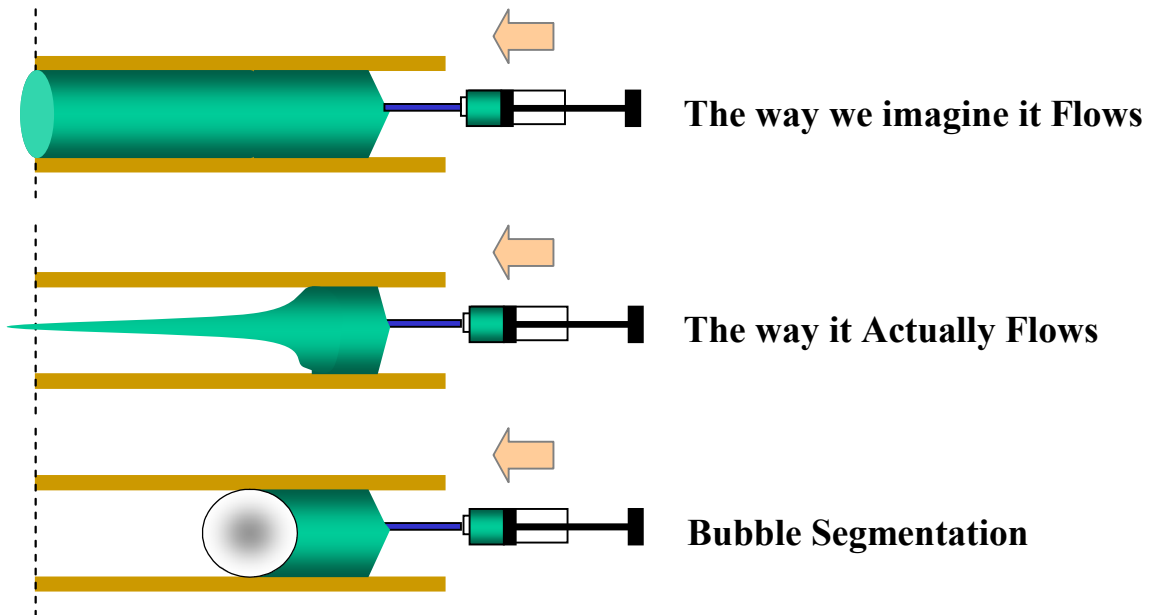
## Flow



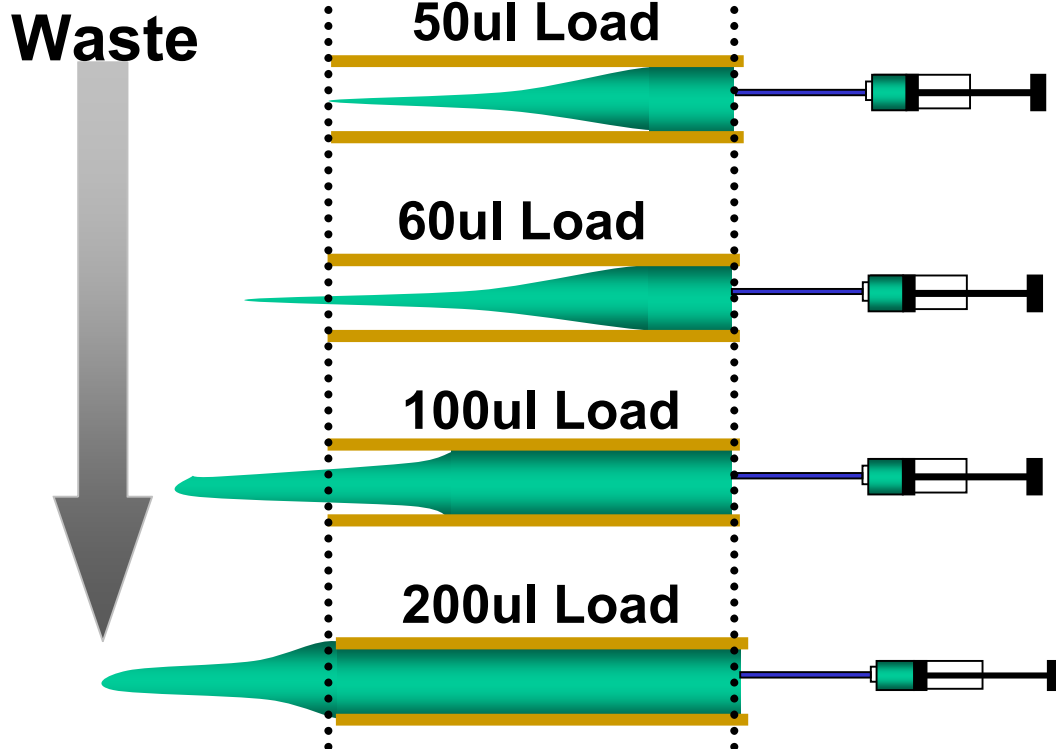


# Fluid Dynamics

## Flow - Injecting a Loop

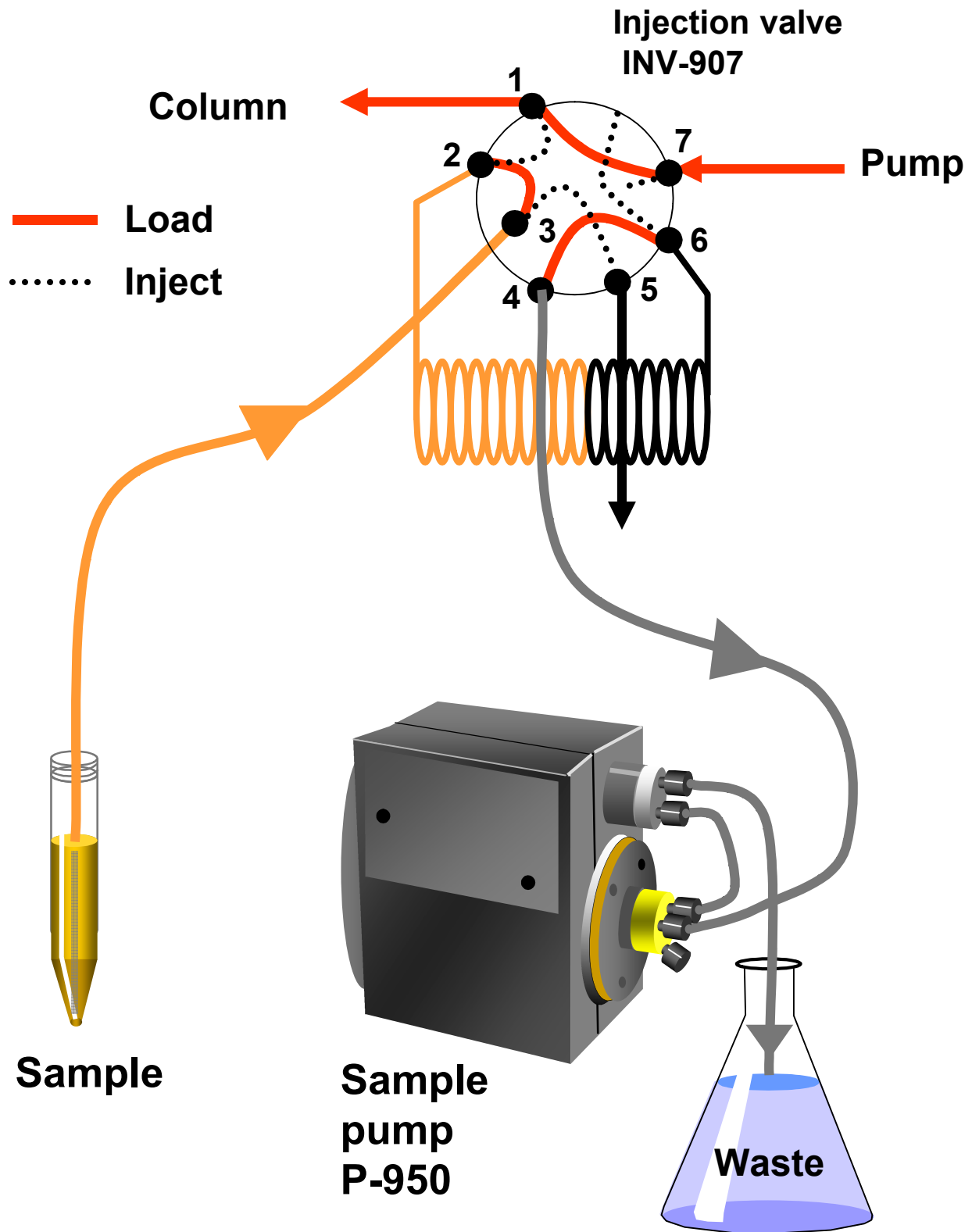


**100ul Loop**

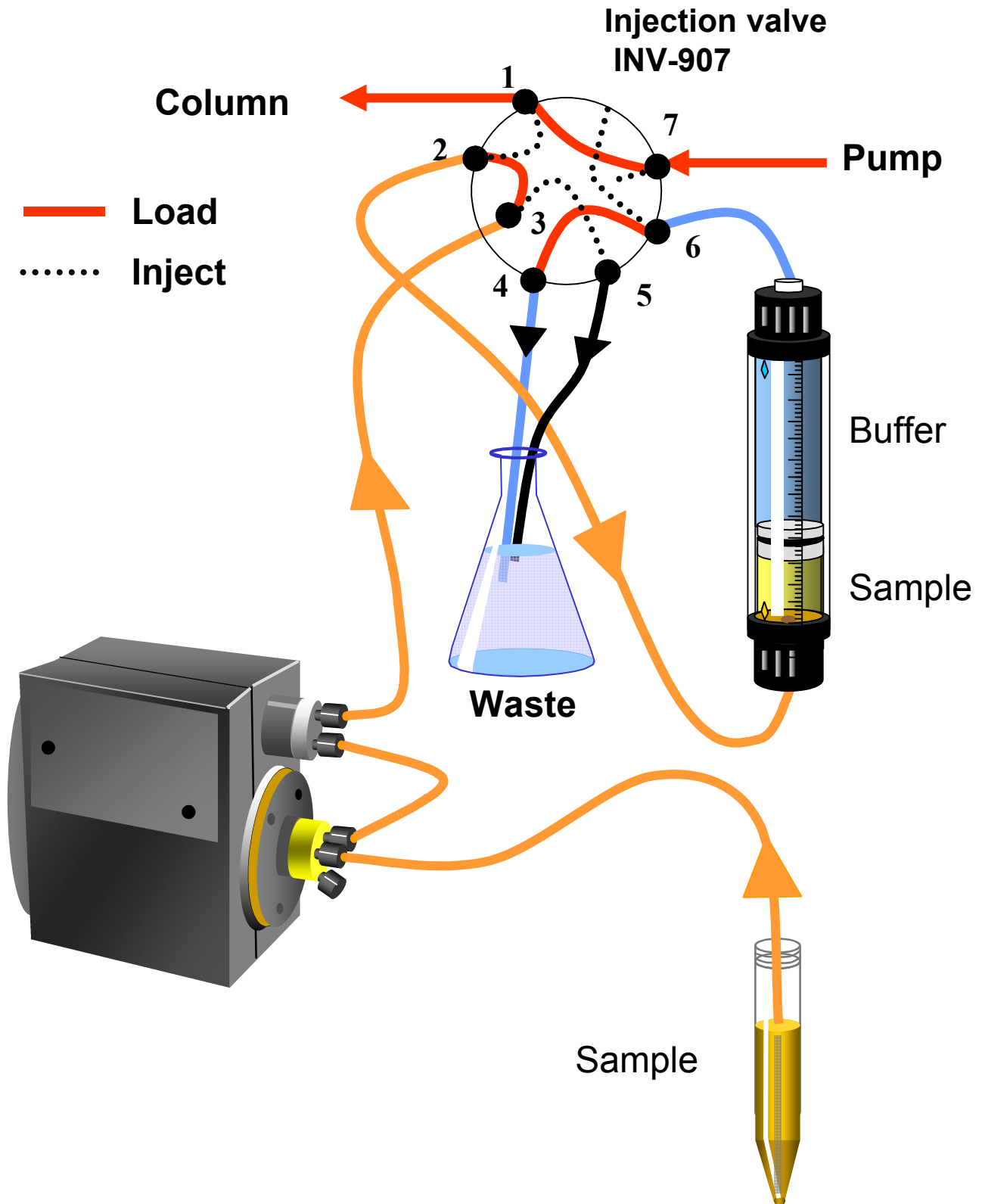


- **Partial Loading Loop = No more than 1/2 Loop Volume**
- **Total Loading Loop = Inject 2X Loop Volume**

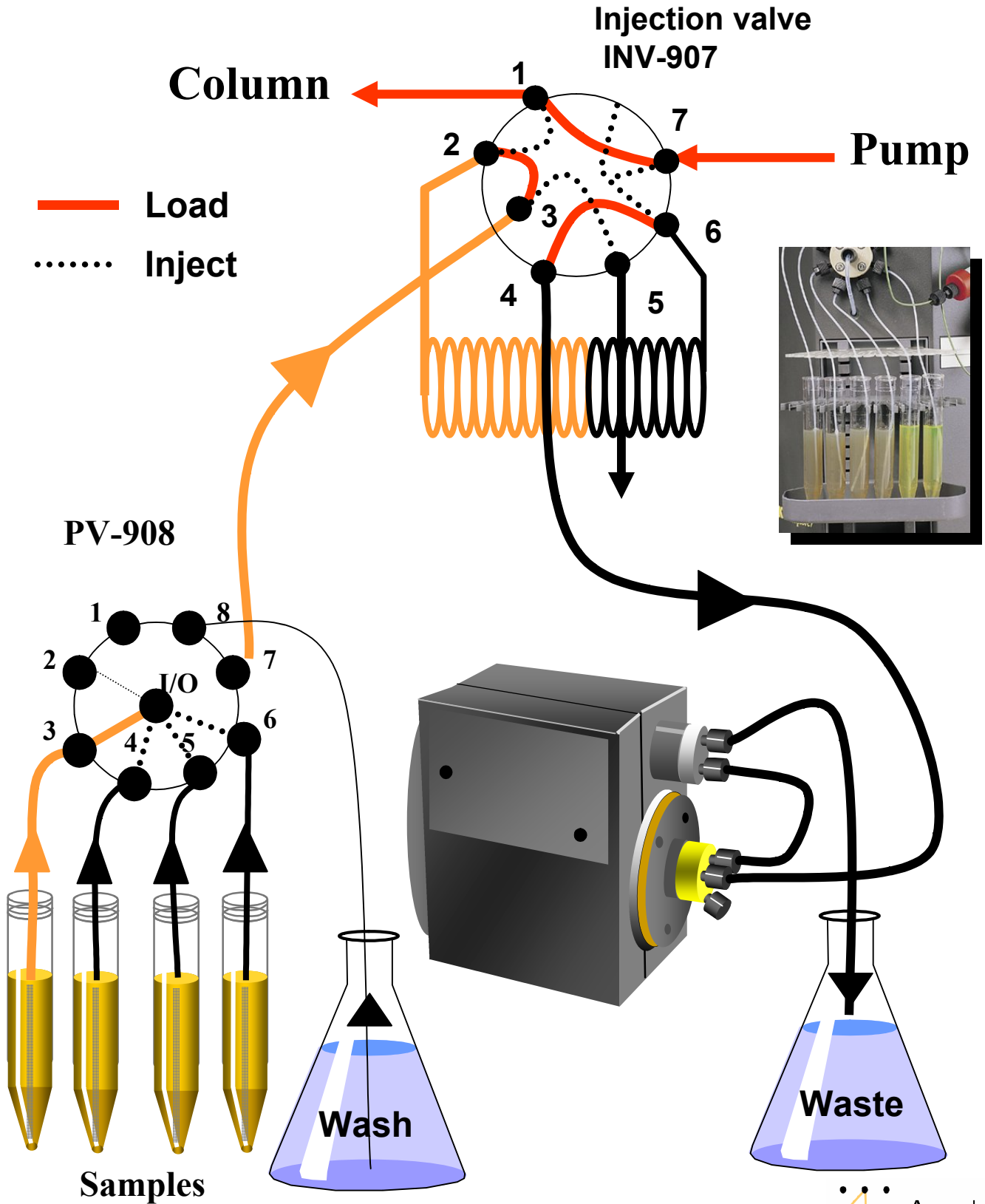
# LOADING A SAMPLE LOOP



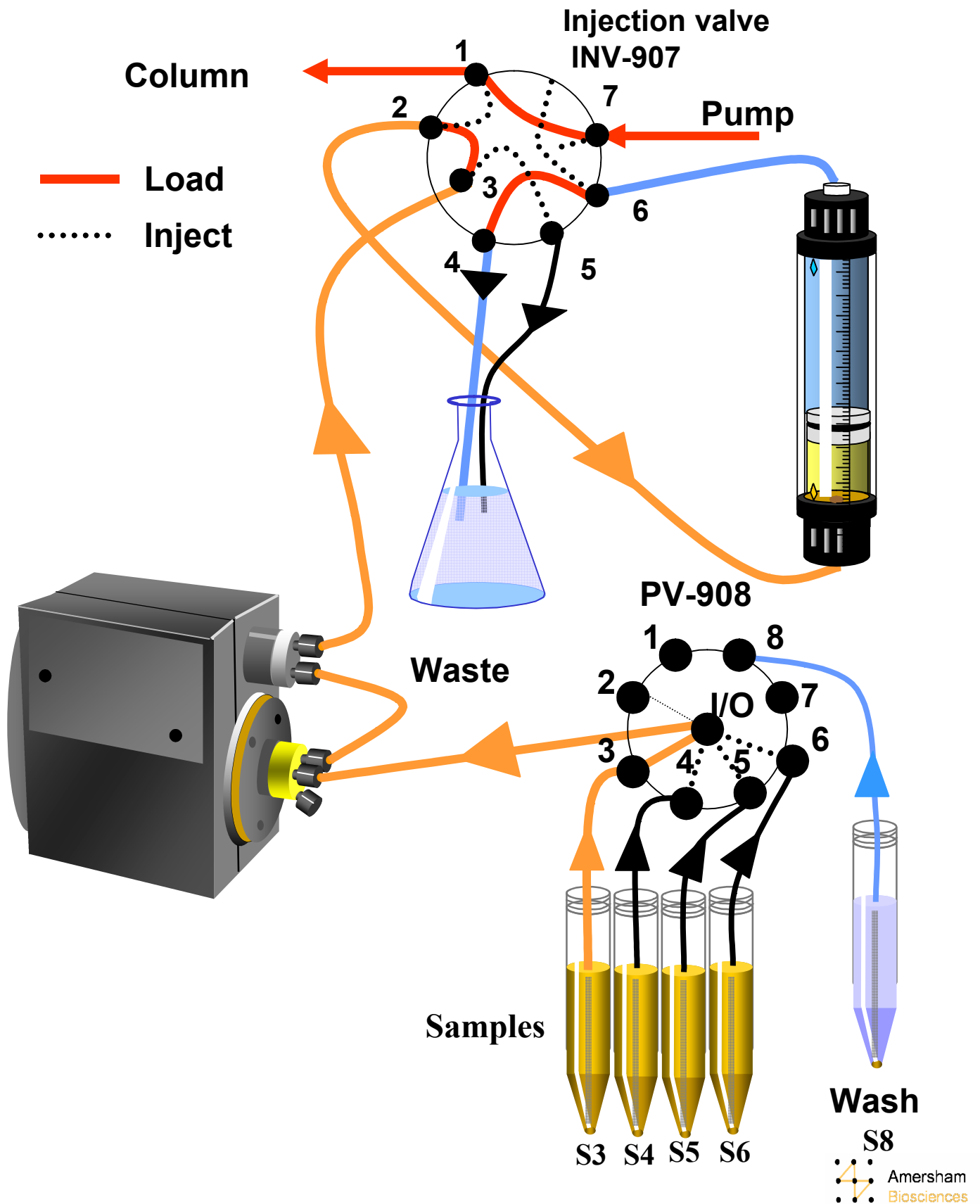
# LOADING A SUPER LOOP



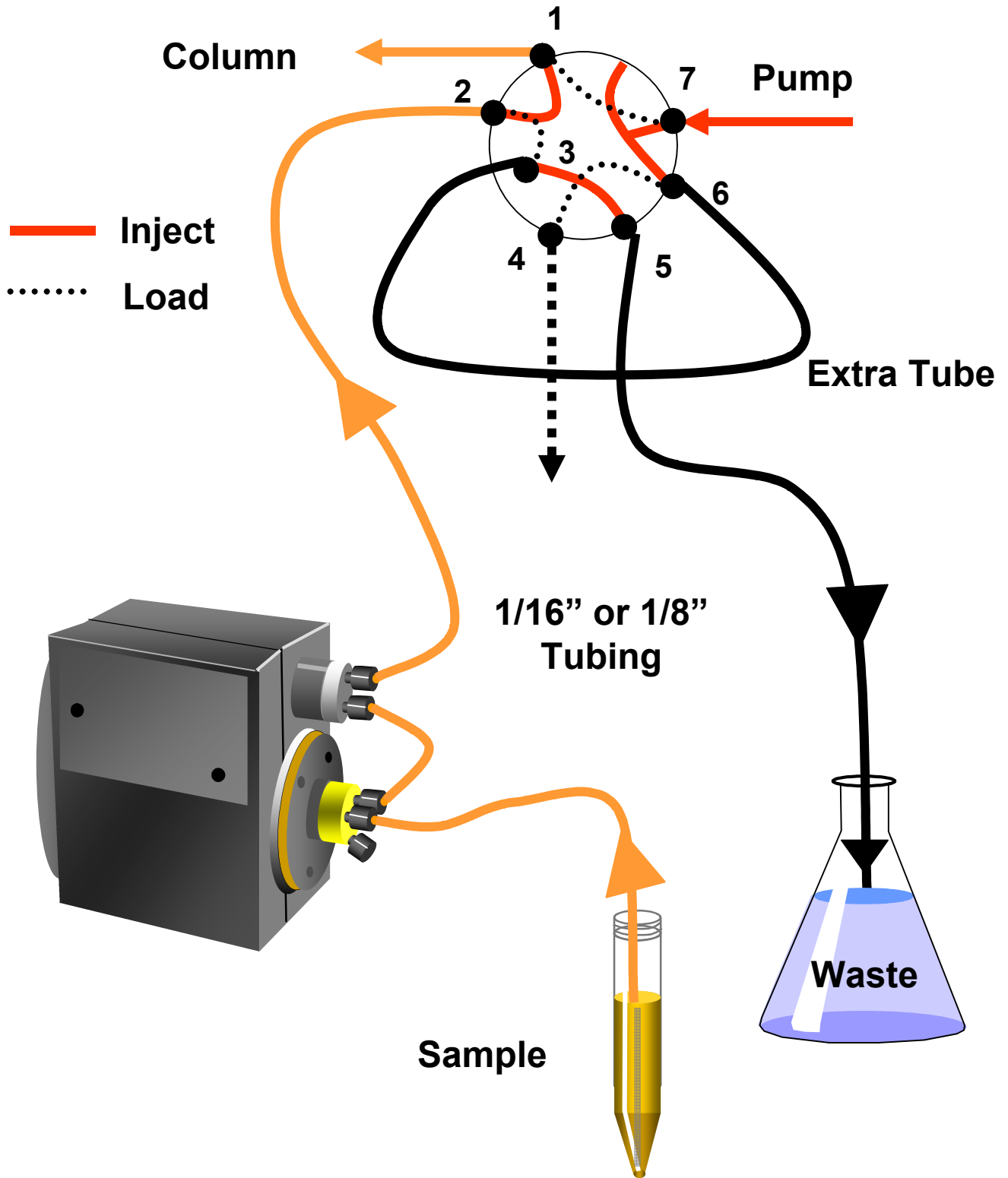
# MULTI-LOADING A SAMPLE LOOP



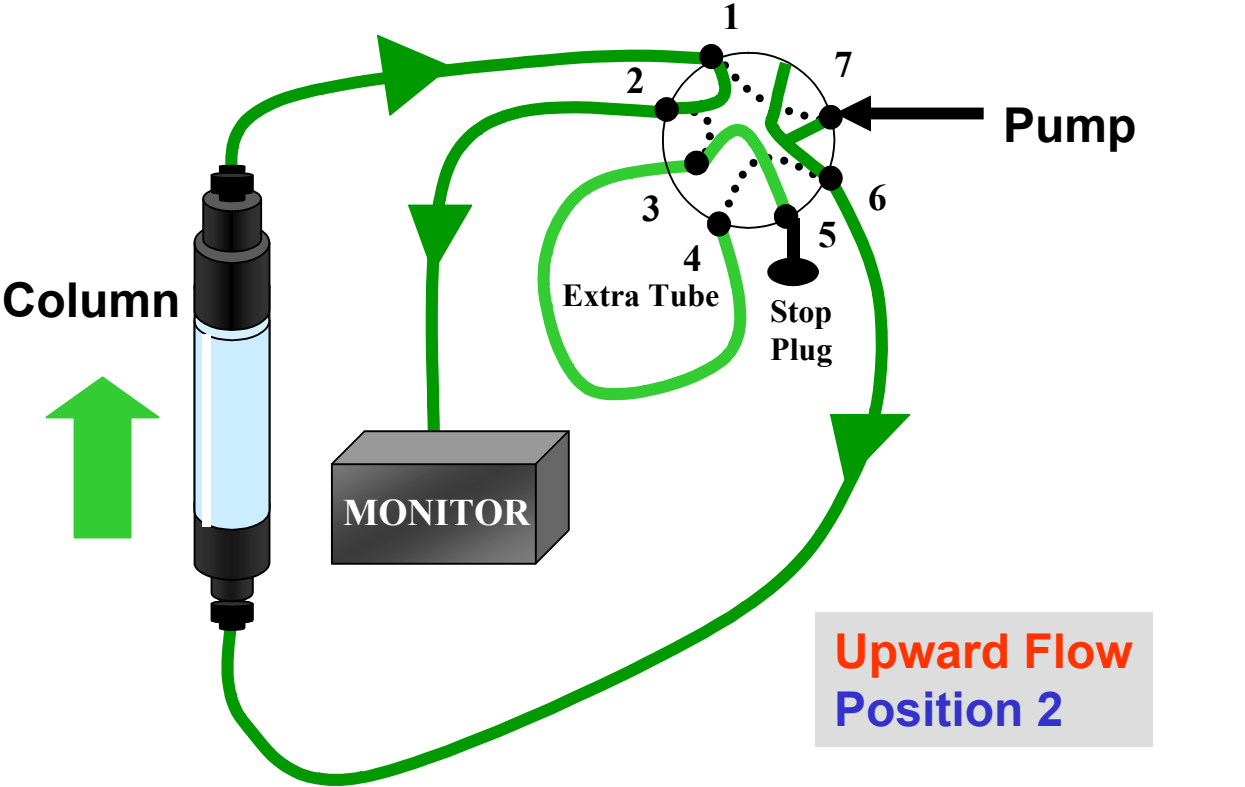
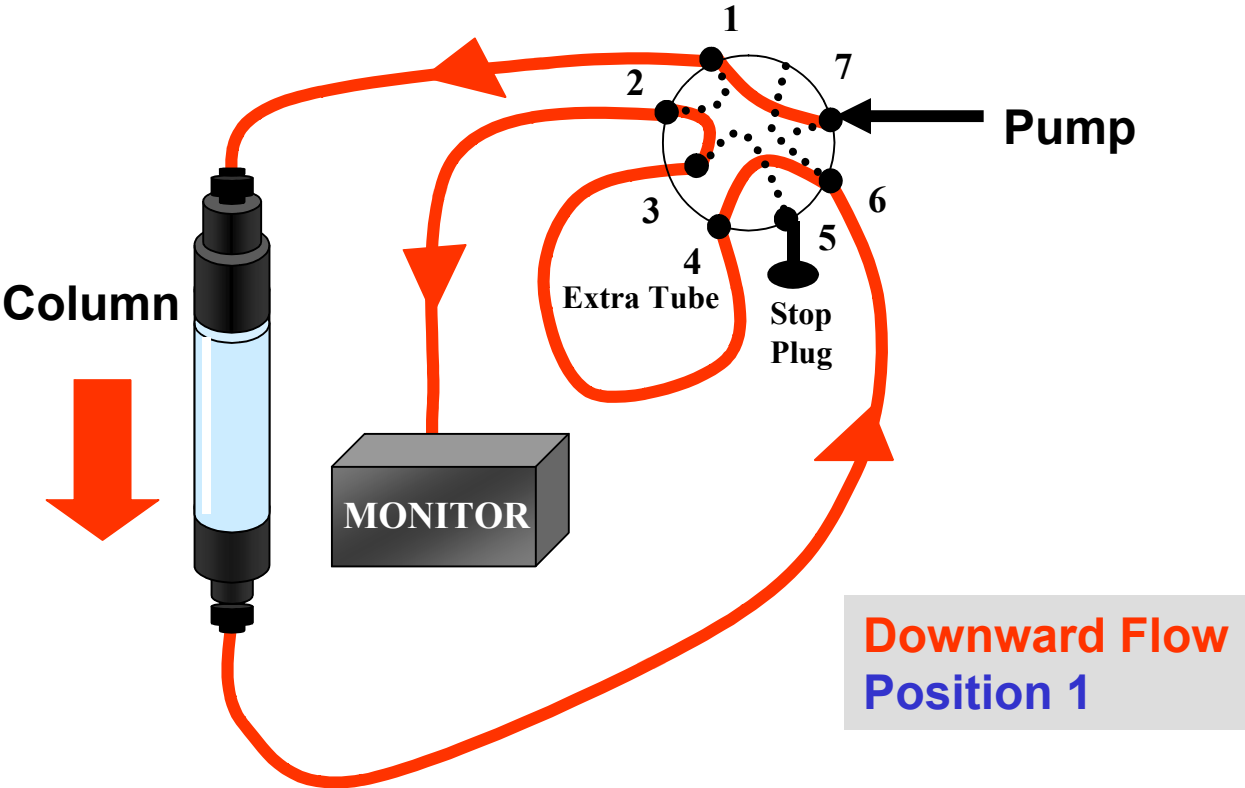
# MULTI-LOADING A SUPER LOOP



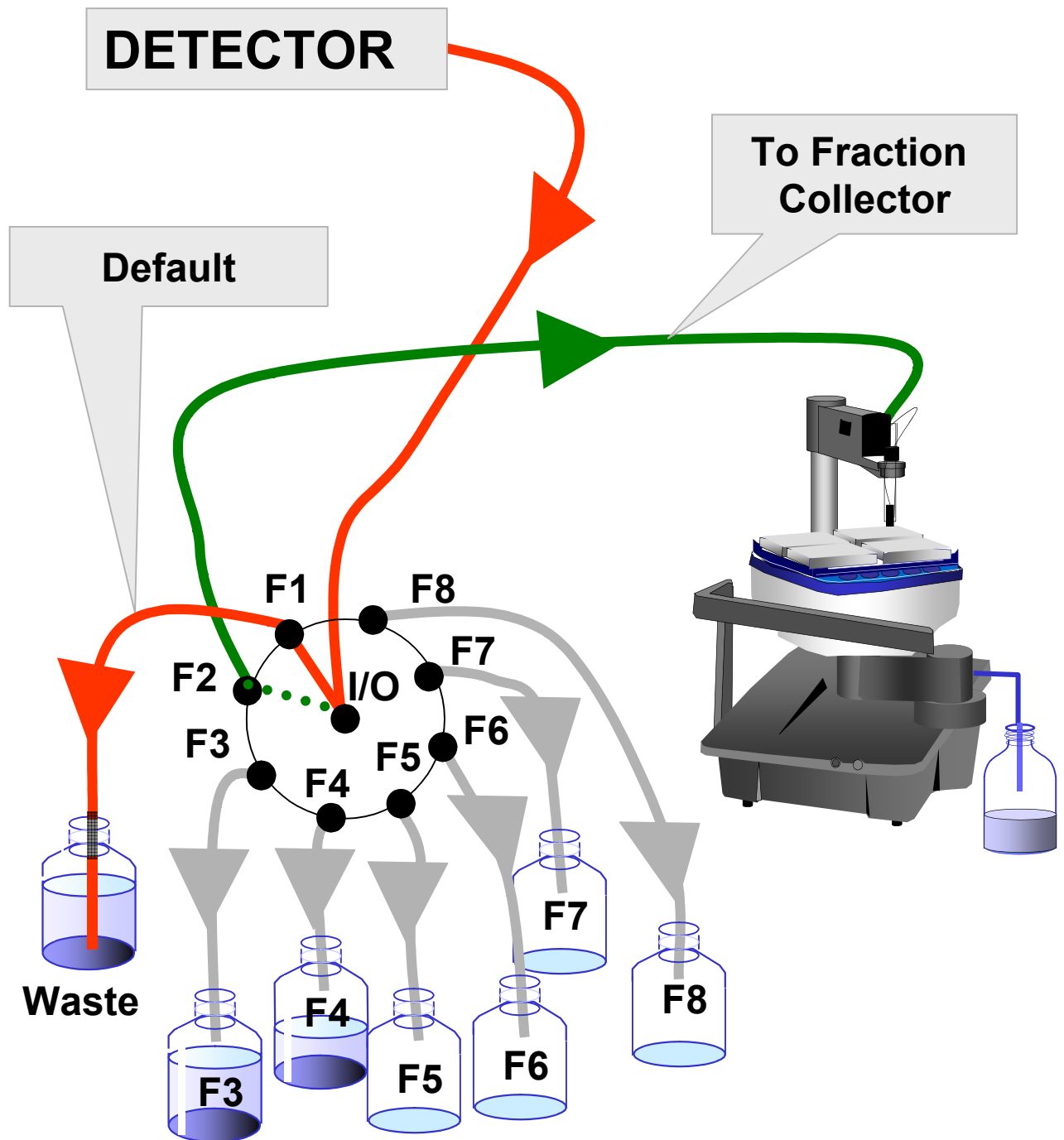
# DIRECT LOADING ON TO COLUMN



# REVERSE FLOW VALVE ( INV-907 )

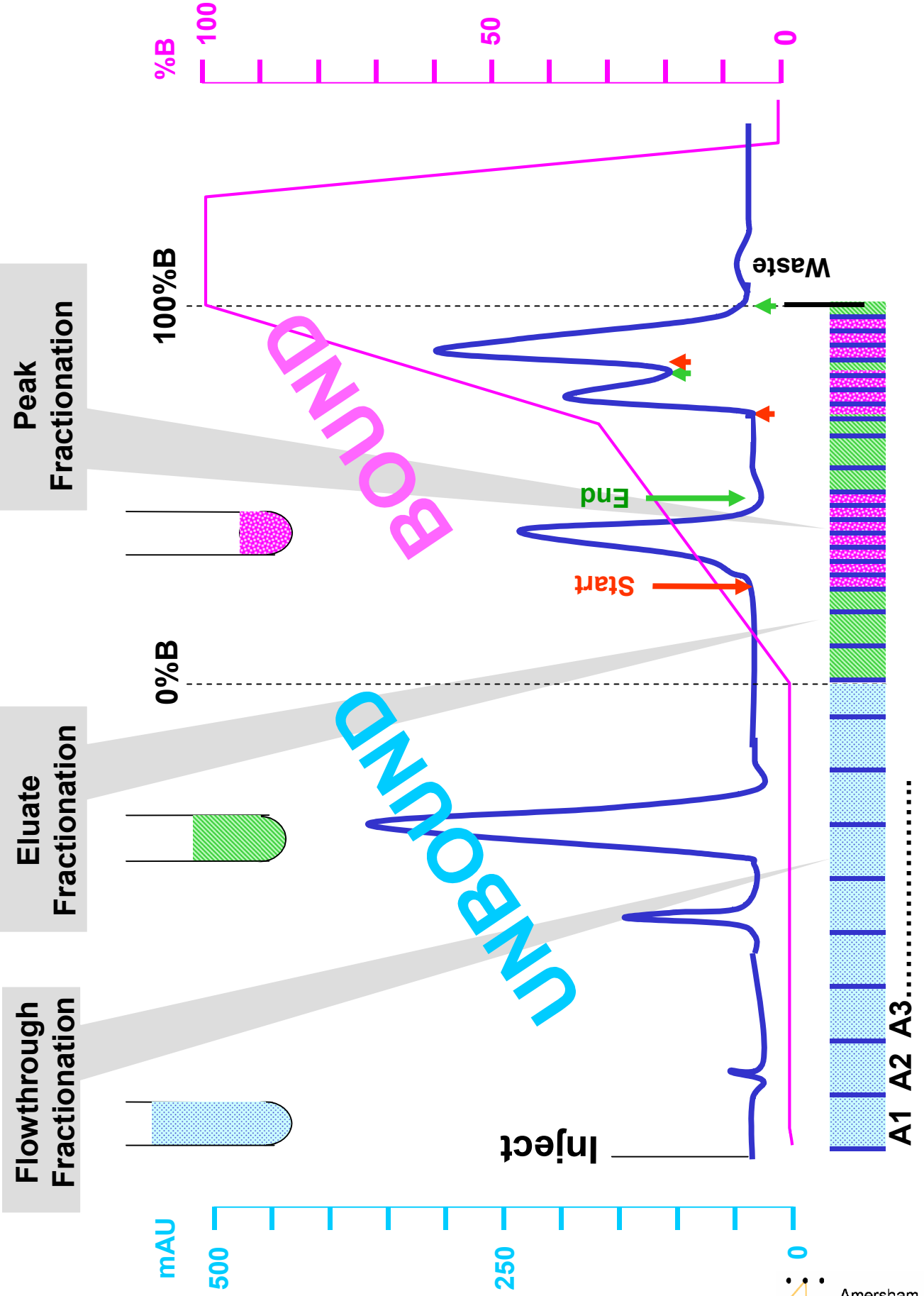


# OUTLET VALVE PV-908

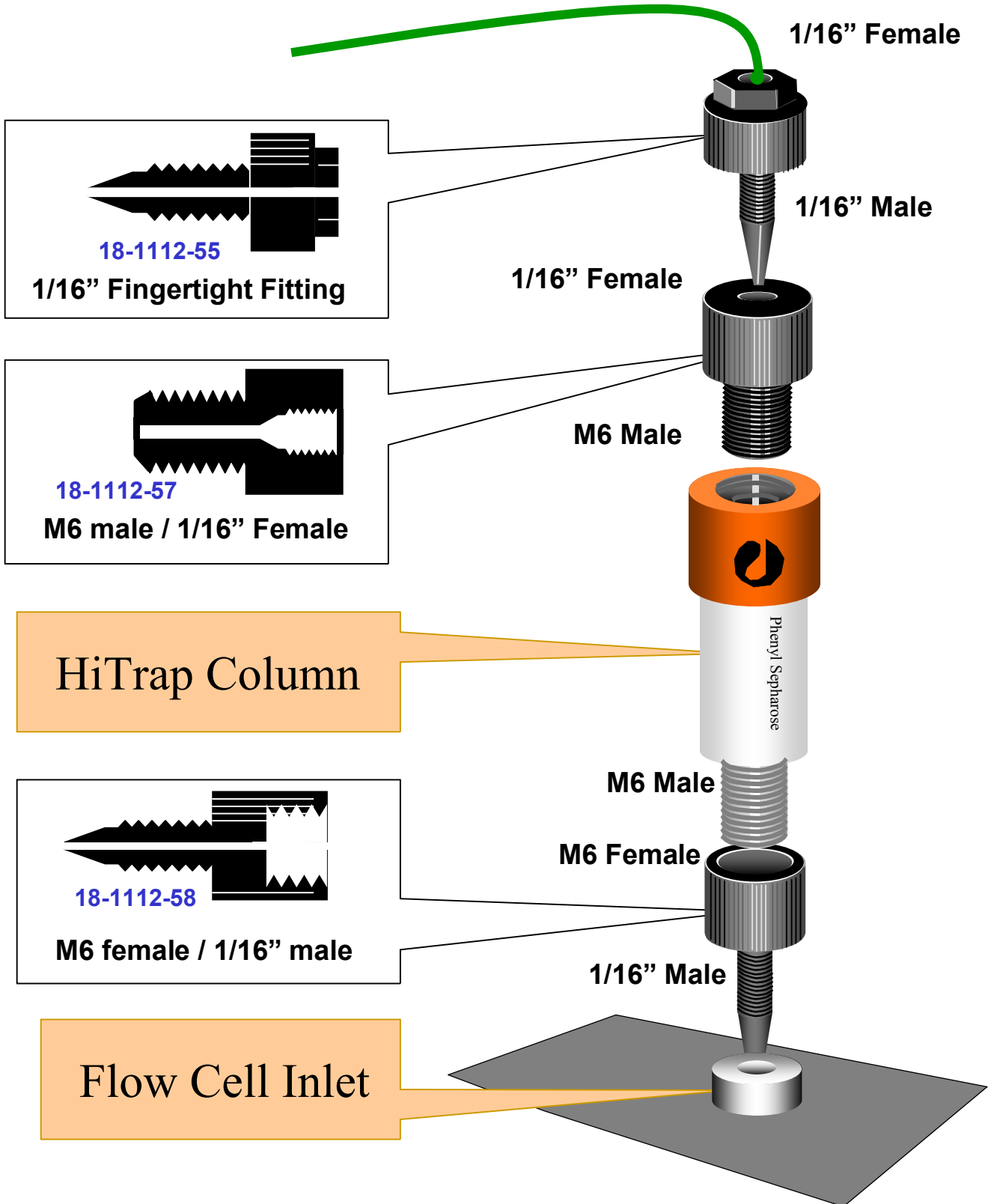




# Fraction Collection



# HiTrap Connections



# Multiple HiTrap Arrangement ( Series )

